

## Product datasheet for **AP13867PU-N**

### PKMYT1 (C-term) Rabbit Polyclonal Antibody

#### Product data:

Product Type:	Primary Antibodies
Applications:	WB
Recommended Dilution:	ELISA 1:1,000. Western blot 1:100 - 1:500.
Reactivity:	Human
Host:	Rabbit
Isotype:	Ig
Clonality:	Polyclonal
Immunogen:	This antibody is generated from rabbits immunized with a KLH conjugated synthetic peptide selected from the C-terminal region of human PKMYT1.
Specificity:	This antibody detects MYT1 at C-term.
Formulation:	PBS with 0.09% (W/V) sodium azide State: Purified State: Liquid Ig fraction
Concentration:	lot specific
Purification:	Purified through a protein G column, eluted with high and low pH buffers and neutralized immediately, followed by dialysis against PBS.
Conjugation:	Unconjugated
Storage:	Store the antibody at 2 - 8 °C up to one month or (in aliquots) at -20 °C for longer. Avoid repeated freezing and thawing.
Stability:	Shelf life: one year from despatch.
Gene Name:	protein kinase, membrane associated tyrosine/threonine 1
Database Link:	<a href="#">Entrez Gene 9088 Human Q99640</a>



[View online »](#)

**Background:**

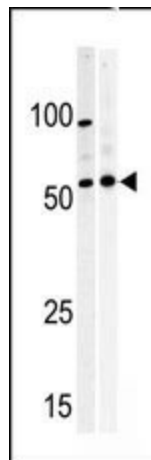
The protein encoded by this gene is a member of the serine/threonine protein kinase family. This kinase preferentially phosphorylates and inactivates cell division cycle 2 protein (CDC2), and thus negatively regulates cell cycle G2/M transition. This kinase is associated with the membrane throughout the cell cycle. Its activity is highly regulated during the cell cycle. Protein kinases AKT1/PKB and PLK (Polo-like kinase) have been shown to phosphorylate and regulate the activity of this kinase. Alternatively spliced transcript variants encoding distinct isoforms have been reported. Transcript Variant: This variant (1) encodes the longer isoform (1).

**Synonyms:**

Myt1 kinase, MYT1

**Note:**

Molecular weight: 54521 Da.

**Product images:**

Western blot analysis of anti-PKMYT1 Pabin A375 (left) and Y79 (right) cell line lysate. PKMYT1 (arrow) was detected using the purified Pab.