

Product datasheet for **AP13847PU-N**

RIP3 (RIPK3) (Center) Rabbit Polyclonal Antibody

Product data:

Product Type:	Primary Antibodies
Applications:	IHC, WB
Recommended Dilution:	Immunohistochemistry on Paraffin sections: 1/10-1/50. Western blot: 1/1000. Enzyme immunoassay: >1/1000 (peptide elisa only)
Reactivity:	Human, Mouse
Host:	Rabbit
Isotype:	Ig
Clonality:	Polyclonal
Immunogen:	This antibody is generated from rabbits immunized with a KLH conjugated synthetic peptide (aa 61-91) selected from the center region of human RIPK3.
Specificity:	This antibody detects RIPK3 / RIP3.
Formulation:	PBS with 0.09% (W/V) sodium azide State: Purified State: Liquid Ig fraction
Concentration:	lot specific
Purification:	Protein G column, eluted with high and low pH buffers and neutralized immediately, followed by dialysis against PBS
Conjugation:	Unconjugated
Storage:	Store the antibody at 2 - 8 °C up to one month or (in aliquots) at -20 °C for longer. Avoid repeated freezing and thawing.
Stability:	Shelf life: one year from despatch.
Gene Name:	receptor interacting serine/threonine kinase 3
Database Link:	Entrez Gene 11035 Human Q9Y572



[View online »](#)

Background:

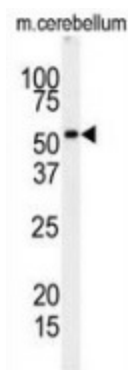
The product of the RIPK3 gene is a member of the receptor-interacting protein (RIP) family of serine/threonine protein kinases, and contains a C-terminal domain unique from other RIP family members. The encoded protein is predominantly localized to the cytoplasm, and can undergo nucleocytoplasmic shuttling dependent on novel nuclear localization and export signals. It is a component of the tumor necrosis factor (TNF) receptor-I signaling complex, and can induce apoptosis and weakly activate the NF-kappaB transcription factor.

Synonyms:

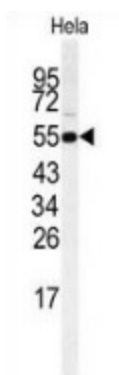
RIP-3

Note:

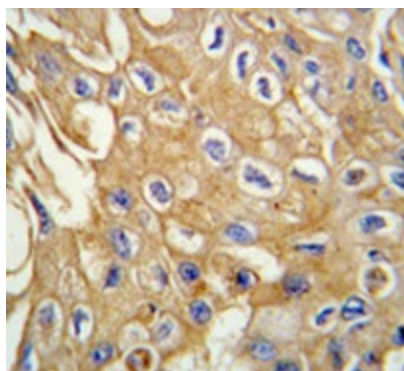
Molecular weight: 56901 Da.

Product images:


Western blot analysis of RIPK3 (arrow) in mouse cerebellum tissue lysates (35ug/lane) using RIPK3 / RIP3 antibody.



Western blot analysis of RIPK3 (arrow) in HeLa cell line lysates (35ug/lane) using RIPK3 / RIP3 antibody.



Immunohistochemistry analysis in human lung carcinoma tissue (Formalin-fixed, Paraffin-embedded) using RIPK3 / RIP3 antibody., followed by peroxidase-conjugated secondary antibody and DAB staining. This data demonstrates the use of this antibody for IHC. Clinical relevance has not been evaluated.