

## Product datasheet for **AP13842PU-N**

### RBKS (N-term) Rabbit Polyclonal Antibody

#### Product data:

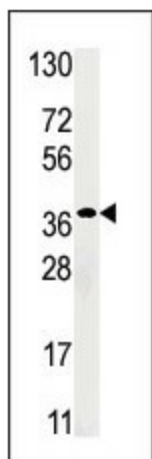
|                       |   |
|-----------------------|---|
| Product Type:         | Primary Antibodies  |
| Applications:         | IHC, WB   |
| Recommended Dilution: | ELISA 1:1,000.<br>Western blot 1:100 - 1:500.<br>Immunohistochemistry 1:50 - 1:100.   |
| Reactivity:           | Human   |
| Host:                 | Rabbit  |
| Isotype:              | Ig  |
| Clonality:            | Polyclonal  |
| Immunogen:            | KLH conjugated synthetic peptide selected from the N-terminal region of human RBSK  |
| Specificity:          | This antibody detects RBSK at N-term.   |
| Formulation:          | PBS with 0.09% (W/V) sodium azide<br>State: Purified<br>State: Liquid Ig fraction   |
| Concentration:        | lot specific  |
| Purification:         | Protein G column, eluted with high and low pH buffers and neutralized immediately, followed by dialysis against PBS   |
| Conjugation:          | Unconjugated  |
| Storage:              | Store the antibody at 2 - 8 °C for up to one month or (in aliquots) at -20 °C for longer. Avoid repeated freezing and thawing.  |
| Stability:            | Shelf life: One year from despatch.   |
| Gene Name:            | ribokinase  |
| Database Link:        | <a href="#">Entrez Gene 64080 Human Q9H477</a>  |
| Background:           | RBSK belongs to the pfkB family of carbohydrate kinases. It phosphorylates ribose to form ribose-5-phosphate in the presence of ATP and magnesium as a first step in ribose metabolism. |
| Synonyms:             | 5230400M11Rik; DKFZp686G13268; RBSK; ribokinase   |



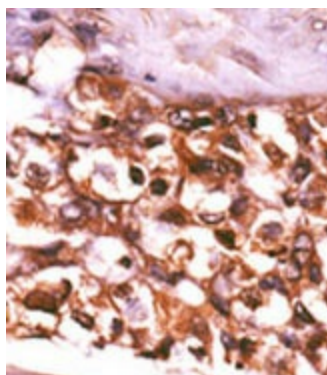
[View online »](#)

Note: Molecular weight: 34143 Da.

### Product images:



Western blot analysis of anti-RBSK Pab in HepG2 cell line lysate (35 ug/lane). RBSK (arrow) was detected using the purified Pab (1:40 dilution).



Formalin-fixed and paraffin-embedded human cancer tissue (hepatocarcinoma) reacted with the primary antibody, which was peroxidase-conjugated to the secondary antibody, followed by AEC staining. This data demonstrates the use of this antibody for immunohistochemistry; clinical relevance has not been evaluated.