

Product datasheet for **AP13841PU-N**

CLASP2 (C-term) Rabbit Polyclonal Antibody

Product data:

Product Type:	Primary Antibodies
Applications:	IHC, WB
Recommended Dilution:	ELISA: 1/1,000 Western blotting: 1/100-1/500 Immunohistochemistry: 1/50-1/100.
Reactivity:	Human
Host:	Rabbit
Isotype:	Ig
Clonality:	Polyclonal
Immunogen:	This antibody is generated from rabbits immunized with a KLH conjugated synthetic peptide selected from the C-terminal region of human CLASP2.
Specificity:	This antibody is specific for human CLASP2. Other species not tested.
Formulation:	PBS containing 0.09% (W/V) Sodium Azide as preservative. State: Aff - Purified State: Liquid purified Ig fraction.
Concentration:	lot specific
Purification:	Protein A Chromatography followed by peptide Affinity Purification.
Conjugation:	Unconjugated
Storage:	Store the antibody undiluted at 2-8°C for one month or (in aliquots) at -20°C for longer. Avoid repeated freezing and thawing.
Stability:	Shelf life: one year from despatch.
Gene Name:	cytoplasmic linker associated protein 2
Database Link:	Entrez Gene 23122 Human O75122



[View online »](#)

Background:

Microtubule plus-end tracking protein that promotes the stabilization of dynamic microtubules. Required for the polarization of the cytoplasmic microtubule arrays in migrating cells towards the leading edge of the cell. May act at the cell cortex to enhance the frequency of rescue of depolymerizing microtubules by attaching their plus-ends to cortical platforms composed of ERC1 and PHLDB2. This cortical microtubule stabilizing activity is regulated at least in part by phosphatidylinositol 3-kinase signaling. Also performs a similar stabilizing function at the kinetochore which is essential for the bipolar alignment of chromosomes on the mitotic spindle.

Synonyms:

CLIP-associating protein 2, KIAA0627, hOrbit2

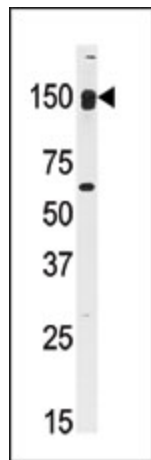
Product images:

Figure 1. Western blot analysis of anti-CLASP2 Antibody (C-term) (Cat. AP13841PU-N) in mouse kidney tissue lysates (35ug/lane). CLASP2 (arrow) was detected using the purified Ab (1/300 dilution).

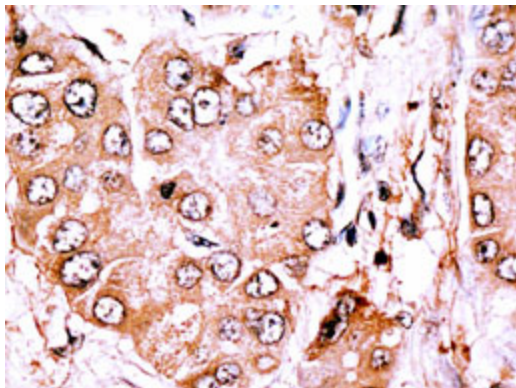


Figure 1. Formalin-fixed and paraffin-embedded human Hepatocellular carcinoma reacted with anti-CLASP2, C-term (AP13841PU-N), which was peroxidase-conjugated by the secondary antibody, followed by DAB staining.