

## Product datasheet for **AP13828PU-N**

### **PKM2 (PKM) (C-term) Rabbit Polyclonal Antibody**

#### **Product data:**

<b>Product Type:</b>	Primary Antibodies
<b>Applications:</b>	IHC, WB
<b>Recommended Dilution:</b>	ELISA: 1/1,000. Western blotting: 1/50 - 1/100. Immunohistochemistry: 1/10 - 1/50.
<b>Reactivity:</b>	Human
<b>Host:</b>	Rabbit
<b>Isotype:</b>	Ig
<b>Clonality:</b>	Polyclonal
<b>Immunogen:</b>	This antibody is generated from rabbits immunized with a KLH conjugated synthetic peptide selected from the C-terminal region of human PKM2.
<b>Specificity:</b>	This antibody reacts to PKM2.
<b>Formulation:</b>	PBS with 0.09% (W/V) sodium azide State: Purified State: Liquid purified Ig
<b>Concentration:</b>	lot specific
<b>Purification:</b>	Prepared by Saturated Ammonium Sulfate (SAS) precipitation followed by dialysis against PBS
<b>Conjugation:</b>	Unconjugated
<b>Storage:</b>	Store the antibody undiluted at 2-8°C for one month or (in aliquots) at -20°C for longer. Avoid repeated freezing and thawing.
<b>Stability:</b>	Shelf life: one year from despatch.
<b>Gene Name:</b>	pyruvate kinase, muscle
<b>Database Link:</b>	<a href="#">Entrez Gene 5315 Human P14618</a>



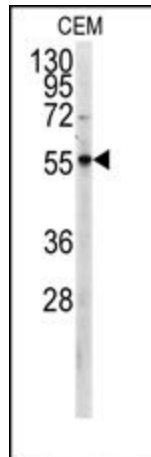
[View online »](#)

**Background:**

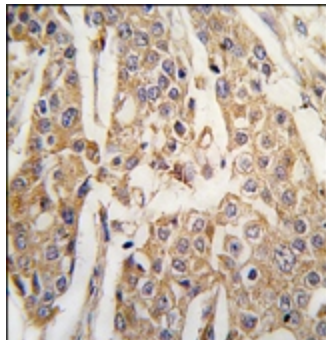
PKM2 is a pyruvate kinase that catalyzes the production of phosphoenolpyruvate from pyruvate and ATP. This protein has been shown to interact with thyroid hormone, and thus may mediate cellular metabolic effects induced by thyroid hormones. This protein has been found to bind Opa protein, a bacterial outer membrane protein involved in gonococcal adherence to and invasion of human cells, suggesting a role of this protein in bacterial pathogenesis.

**Synonyms:**

PK2, PK3, PKM, CTHBP, M2-PK, THBP1, OIP3, OIP-3, Pyruvate kinase 2/3, Pyruvate kinase M1/M2, Pyruvate kinase muscle

**Product images:**

Western blot analysis of anti-PKM2 Antibody (C-term) in CEM cell line lysates (35ug/lane). PKM2 (arrow) was detected using the purified Pab.



Formalin-fixed and paraffin-embedded human breast carcinoma tissue reacted with PKM2 antibody (C-term), which was peroxidase-conjugated to the secondary antibody, followed by DAB staining.