

## Product datasheet for **AP13824PU-N**

### PIM3 (C-term) Rabbit Polyclonal Antibody

#### Product data:

Product Type:	Primary Antibodies
Applications:	IHC, WB
Recommended Dilution:	ELISA: 1/1,000. Western blotting: 1/100 - 1/500. Immunohistochemistry: 1/50.
Reactivity:	Human
Host:	Rabbit
Isotype:	Ig
Clonality:	Polyclonal
Immunogen:	This antibody is generated from rabbits immunized with a KLH conjugated synthetic peptide selected from the C-terminal region of human PIM3.
Specificity:	This antibody reacts to PIM3.
Formulation:	PBS with 0.09% (W/V) sodium azide State: Purified State: Liquid purified Ig
Concentration:	lot specific
Purification:	Protein G column, eluted with high and low pH buffers and neutralized immediately, followed by dialysis against PBS
Conjugation:	Unconjugated
Storage:	Store the antibody undiluted at 2-8°C for one month or (in aliquots) at -20°C for longer. Avoid repeated freezing and thawing.
Stability:	Shelf life: one year from despatch.
Gene Name:	Pim-3 proto-oncogene, serine/threonine kinase
Database Link:	<a href="#">Entrez Gene 415116 Human</a> <a href="#">Q86V86</a>



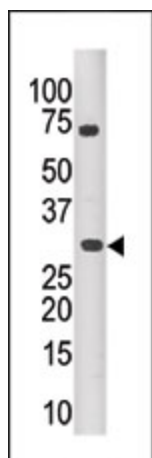
[View online »](#)

**Background:** PIM3 is a member of the Ser/Thr protein kinase family that may be involved in cell cycle progression and anti-apoptosis process. This protein has been implicated in proliferation of human hepatoma cell lines. PIM3 is widely expressed, with the exception of no expression observed in colon, thymus, and small intestine. PIM3 is expressed in human hepatoma cell lines but not in normal liver tissues.

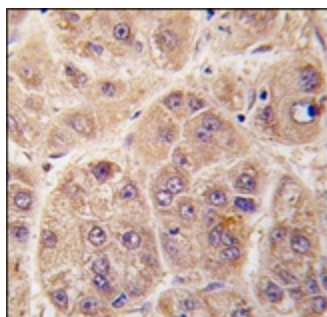
**Synonyms:** PIM-3

**Note:** Protocol: 1. Mikkers, H., et al., Mol. Cell. Biol. 24(13):6104-6115 (2004).  
2. Eichmann, A., et al., Oncogene 19(9):1215-1224 (2000).

### Product images:



The anti-PIM3 Pab is used in Western blot to detect PIM3 in mouse kidney tissue lysate.



Formalin-fixed and paraffin-embedded human hepatocarcinoma tissue reacted with PIM3 antibody (C-term), which was peroxidase-conjugated to the secondary antibody, followed by DAB staining.