

Product datasheet for **AP13823PU-N**

PGK2 (C-term) Rabbit Polyclonal Antibody

Product data:

Product Type:	Primary Antibodies
Applications:	WB
Recommended Dilution:	ELISA: 1/1,000. Western blotting: 1/100 - 1/500.
Reactivity:	Human
Host:	Rabbit
Isotype:	Ig
Clonality:	Polyclonal
Immunogen:	This antibody is generated from rabbits immunized with a KLH conjugated synthetic peptide selected from the C-terminal region of human PGK2.
Specificity:	This antibody reacts to PGK2.
Formulation:	PBS with 0.09% (W/V) sodium azide State: Purified State: Liquid purified Ig
Concentration:	lot specific
Purification:	Protein G column, eluted with high and low pH buffers and neutralized immediately, followed by dialysis against PBS
Conjugation:	Unconjugated
Storage:	Store the antibody undiluted at 2-8°C for one month or (in aliquots) at -20°C for longer. Avoid repeated freezing and thawing.
Stability:	Shelf life: one year from despatch.
Gene Name:	phosphoglycerate kinase 2
Database Link:	Entrez Gene 5232 Human P07205

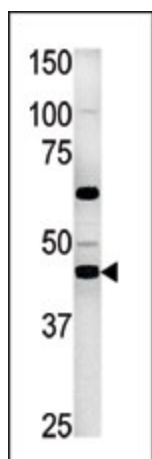


[View online »](#)

Background: PGK2 is a form of phosphoglycerate kinase unique to spermatozoa. The autosomal PGK2 gene lacks introns and contains characteristics of a processed gene. The conservation of function in this processed PGK2 gene and its tissue-specific expression in spermatogenesis suggests that it exists as a compensatory response to the inactivation of the X-linked PGK1 gene in spermatogenic cells before meiosis.

Synonyms: PGKB, Phosphoglycerate kinase testis specific

Product images:



Western blot analysis of anti-PGK2 in HepG2 cell line lysate (35ug/lane).PGK2 (arrow) was detected using the purified Pab (1:30 dilution).