

Product datasheet for **AP13816PU-N**

PCTAIRE1 (CDK16) (C-term) Rabbit Polyclonal Antibody

Product data:

Product Type:	Primary Antibodies
Applications:	WB
Recommended Dilution:	ELISA: 1/1,000. Western blotting: 1/100 - 1/500.
Reactivity:	Human
Host:	Rabbit
Isotype:	Ig
Clonality:	Polyclonal
Immunogen:	This antibody is generated from rabbits immunized with a KLH conjugated synthetic peptide selected from the C-terminal region of human PCKT1.
Specificity:	This antibody reacts to PCTAIRE1 (PCKT1).
Formulation:	PBS with 0.09% (W/V) sodium azide State: Purified State: Liquid purified Ig
Concentration:	lot specific
Purification:	Protein G column, eluted with high and low pH buffers and neutralized immediately, followed by dialysis against PBS
Conjugation:	Unconjugated
Storage:	Store the antibody undiluted at 2-8°C for one month or (in aliquots) at -20°C for longer. Avoid repeated freezing and thawing.
Stability:	Shelf life: one year from despatch.
Gene Name:	cyclin-dependent kinase 16
Database Link:	Entrez Gene 5127 Human Q00536
Background:	The protein encoded by this gene belongs to the cdc2/cdkx subfamily of the ser/thr family of protein kinases. It may play a role in signal transduction cascades in terminally differentiated cells. This gene is thought to escape X inactivation. Two transcript variants encoding the same protein have been found for this gene.

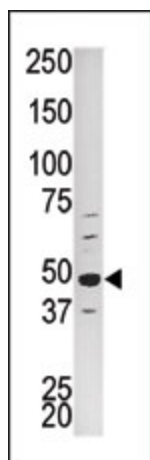


[View online »](#)

Synonyms: PCTAIRE-motif protein kinase 1, PCTAIRE-1, PCTAIRE 1, PCTAIRE1

Protein Families: Druggable Genome, Protein Kinase

Product images:



The anti-PCTK1 Pab is used in Western blot to detect PCTK1 in HepG2 tissue lysate