

## Product datasheet for **AP13792PU-N**

### **MNK1 (MKNK1) (N-term) Rabbit Polyclonal Antibody**

#### **Product data:**

<b>Product Type:</b>	Primary Antibodies
<b>Applications:</b>	WB
<b>Recommended Dilution:</b>	ELISA: 1/1,000. Western blotting: 1/100 - 1/500.
<b>Reactivity:</b>	Human
<b>Host:</b>	Rabbit
<b>Isotype:</b>	Ig
<b>Clonality:</b>	Polyclonal
<b>Immunogen:</b>	This antibody is generated from rabbits immunized with a KLH conjugated synthetic peptide selected from the N-terminal region of human MKNK1.
<b>Specificity:</b>	This antibody reacts to MKNK1.
<b>Formulation:</b>	PBS with 0.09% (W/V) sodium azide State: Purified State: Liquid purified Ig
<b>Concentration:</b>	lot specific
<b>Purification:</b>	Protein G column, eluted with high and low pH buffers and neutralized immediately, followed by dialysis against PBS
<b>Conjugation:</b>	Unconjugated
<b>Storage:</b>	Store the antibody undiluted at 2-8°C for one month or (in aliquots) at -20°C for longer. Avoid repeated freezing and thawing.
<b>Stability:</b>	Shelf life: one year from despatch.
<b>Gene Name:</b>	MAP kinase interacting serine/threonine kinase 1
<b>Database Link:</b>	<a href="#">Entrez Gene 8569 Human</a> <a href="#">Q9BUB5</a>



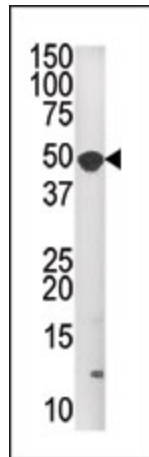
[View online »](#)

**Background:**

MKNK1 encodes a predicted 424-amino acid protein containing a sequence typical of the catalytic domain of serine/threonine kinases and a putative N-terminal nuclear localization signal sequence. C-terminal region of MKNK1 was phosphorylated and activated in vivo and in vitro by ERK1 and p38 MAP kinases, but not by JNK/SAPK. The activated ERK is essential for the activation of MKNK1 in insect cells. MKNK1 was activated following stimulation of HeLa cells with a variety of extracellular stimuli. MNK1 bind tightly to the growth factor-regulated MAP kinases, Erk1 and Erk2, and also binds strongly to the stress-activated kinase, p38.

**Synonyms:**

MN1, MAP kinase-interacting serine/threonine-protein kinase 1

**Product images:**

The anti-MKNK1 Pab is used in Western blot to detect MKNK1 in A2058 tissue lysate