

Product datasheet for **AP13790PU-N**

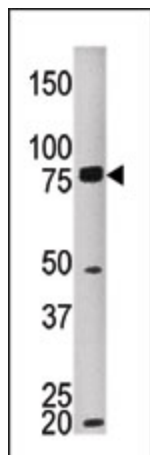
MELK (C-term) Rabbit Polyclonal Antibody

Product data:

Product Type:	Primary Antibodies
Applications:	WB
Recommended Dilution:	ELISA: 1/1,000. Western blotting: 1/100 - 1/500.
Reactivity:	Human
Host:	Rabbit
Isotype:	Ig
Clonality:	Polyclonal
Immunogen:	This antibody is generated from rabbits immunized with a KLH conjugated synthetic peptide selected from the C-terminal region of human MELK.
Specificity:	This antibody reacts to MELK.
Formulation:	PBS with 0.09% (W/V) sodium azide State: Purified State: Liquid purified Ig
Concentration:	lot specific
Purification:	Protein G column, eluted with high and low pH buffers and neutralized immediately, followed by dialysis against PBS
Conjugation:	Unconjugated
Storage:	Store the antibody undiluted at 2-8°C for one month or (in aliquots) at -20°C for longer. Avoid repeated freezing and thawing.
Stability:	Shelf life: one year from despatch.
Gene Name:	maternal embryonic leucine zipper kinase
Database Link:	Entrez Gene 9833 Human Q14680
Background:	MELK Contains 1 protein kinase domain that Belongs to the Ser/Thr protein kinase family. It phosphorylates ZNF622 and may contribute to its redirection to the nucleus. MELK may also be involved in the inhibition of spliceosome assembly during mitosis.
Synonyms:	Maternal embryonic leucine zipper kinase, KIAA0175, hMELK



[View online »](#)

Product images:

The anti-MELK Pab is used in Western blot to detect MKEL in HEPG2 tissue lysate