

Product datasheet for **AP13785PU-N**

MARK4 (C-term) Rabbit Polyclonal Antibody

Product data:

Product Type:	Primary Antibodies
Applications:	WB
Recommended Dilution:	ELISA: 1/1,000. Western blotting: 1/100 - 1/500.
Reactivity:	Human
Host:	Rabbit
Isotype:	Ig
Clonality:	Polyclonal
Immunogen:	This antibody is generated from rabbits immunized with a KLH conjugated synthetic peptide selected from the C-terminal region of human MARK4.
Specificity:	This antibody reacts to MARK4.
Formulation:	PBS with 0.09% (W/V) sodium azide State: Purified State: Liquid purified Ig
Concentration:	lot specific
Purification:	Protein G column, eluted with high and low pH buffers and neutralized immediately, followed by dialysis against PBS
Conjugation:	Unconjugated
Storage:	Store the antibody undiluted at 2-8°C for one month or (in aliquots) at -20°C for longer. Avoid repeated freezing and thawing.
Stability:	Shelf life: one year from despatch.
Gene Name:	microtubule affinity regulating kinase 4
Database Link:	Entrez Gene 57787 Human Q96L34

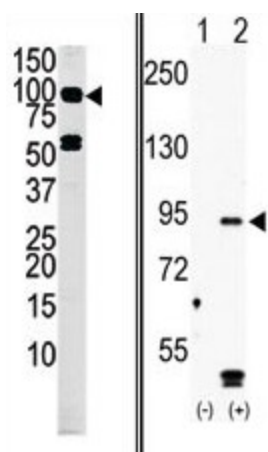
[View online »](#)

Background:

MARK4 contains an N-terminal serine/threonine kinase domain, a central ubiquitin-associated domain, and a C-terminal KA1-associated kinase domain. RT-PCR analysis detects upregulated expression of the gene for MARK4 in nearly all clinical hepatocellular carcinoma cells. Northern blot analysis reveals ubiquitous expression of a 3.6-kb transcript, with highest expression in testis. Immunofluorescence microscopy demonstrates homogeneous cytoplasmic expression. Colony-forming assays show that MARK4 antisense reduces the growth of SNU475 cells. It has been suggested that MARK4 provides a growth advantage to cells.

Synonyms:

MAP microtubule affinity-regulating kinase 4, MARKL1

Product images:


(LEFT)Western blot analysis of anti-MARK4 Pab in mouse liver tissue lysate (35ug/lane). MARK4 (arrow) was detected using the purified Pab (1:40dilution). (RIGHT)Western blot analysis of MARK4 (arrow) using rabbit polyclonal hMARK4-R626 Antibody. 293 cell lysates (2 ug/lane) either nontransfected (Lane 1) or transiently transfected with the MARK4 gene (Lane 2)