

## Product datasheet for **AP13780PU-N**

### LYK5 (STRADA) (N-term) Rabbit Polyclonal Antibody

#### Product data:

Product Type:	Primary Antibodies
Applications:	WB
Recommended Dilution:	ELISA: 1/1,000. Western blotting: 1/100 - 1/500.
Reactivity:	Human
Host:	Rabbit
Isotype:	Ig
Clonality:	Polyclonal
Immunogen:	This antibody is generated from rabbits immunized with a KLH conjugated synthetic peptide selected from the N-terminal region of human LYK5.
Specificity:	This antibody reacts to LYK5.
Formulation:	PBS with 0.09% (W/V) sodium azide State: Purified State: Liquid purified Ig
Concentration:	lot specific
Purification:	Protein G column, eluted with high and low pH buffers and neutralized immediately, followed by dialysis against PBS
Conjugation:	Unconjugated
Storage:	Store the antibody undiluted at 2-8°C for one month or (in aliquots) at -20°C for longer. Avoid repeated freezing and thawing.
Stability:	Shelf life: one year from despatch.
Gene Name:	STE20-related kinase adaptor alpha
Database Link:	<a href="#">Entrez Gene 92335 Human Q7RTN6</a>



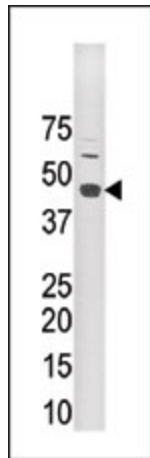
[View online »](#)

**Background:**

LYK5, also STE20-related Adaptor Protein (STRAD) are members of STE-20 like kinase family that are known to stimulate MAPK pathways by directly activating MAPKKK. LYK5 is a novel pseudokinase member of this family consisting of a STE-20 like kinase domain but lacks several residues that are required for its catalytic activity. It specifically binds LKB1 and plays a key role in regulating tumor suppressor activities of LKB1. It functions as an upstream activator of LKB1 and also directs the sub-cellular localization of LKB1 by anchoring it in the cytoplasm. STRAD-LKB1 interaction results in phosphorylation of STRAD and enhanced autophosphorylation of LKB1.

**Synonyms:**

STRADA, STRAD, STE20-related adapter protein, NY-BR-96

**Product images:**

The anti-LYK5 Pab is used in Western blot to detect LYK5 in mouse brain tissue lysate