

Product datasheet for **AP13752PU-N**

IRE1 (ERN2) (N-term) Rabbit Polyclonal Antibody

Product data:

Product Type:	Primary Antibodies
Applications:	WB
Recommended Dilution:	Western blot: 1/1000. Enzyme immunoassay: 1/1000.
Reactivity:	Human, Mouse
Host:	Rabbit
Isotype:	Ig
Clonality:	Polyclonal
Immunogen:	This antibody is generated from rabbits immunized with a KLH conjugated synthetic peptide selected from the N-terminal region of human ERN2.
Specificity:	This antibody reacts to ERN2 / IRE2.
Formulation:	PBS with 0.09% (W/V) sodium azide State: Purified State: Liquid purified Ig
Concentration:	lot specific
Purification:	Prepared by Saturated Ammonium Sulfate (SAS) precipitation followed by dialysis against PBS
Conjugation:	Unconjugated
Storage:	Store the antibody undiluted at 2-8°C for one month or (in aliquots) at -20°C for longer. Avoid repeated freezing and thawing.
Stability:	Shelf life: one year from despatch.
Gene Name:	endoplasmic reticulum to nucleus signaling 2
Database Link:	Entrez Gene 10595 Human Q76MJ5



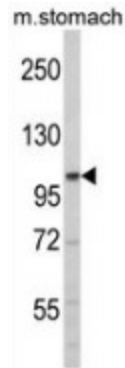
[View online »](#)

Background:

ERN2 induces translational repression through 28S ribosomal RNA cleavage in response to endoplasmic reticulum (ER) stress. This pro-apoptotic appears to play no role in the unfolded-protein response, unlike closely related proteins. Overexpression of ERN2 activates both BiP and CHOP expression, and also leads to the development of programmed cell death. It has been suggested that Ern2 plays a role in multiple facets of the ER stress response in mammalian cells.

Synonyms:

Inositol-requiring protein 2, Ire1-beta

Product images:

Western blot analysis of ERN2 (arrow) in mouse stomach tissue lysates (35ug/lane) using ERN2 / IRE2 antibody. (N-term).