

Product datasheet for **AP13743PU-N**

CDKL2 Rabbit Polyclonal Antibody

Product data:

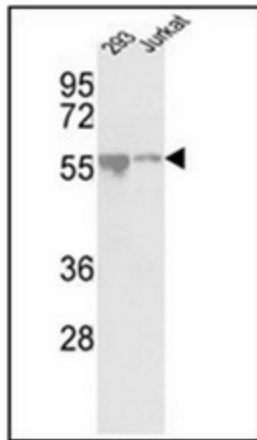
Product Type:	Primary Antibodies
Applications:	WB
Recommended Dilution:	ELISA: 1/1,000. Western blotting: 1/100-1/500.
Reactivity:	Human
Host:	Rabbit
Isotype:	Ig
Clonality:	Polyclonal
Immunogen:	KLH conjugated synthetic peptide between 233~263 amino acids from the center region of Human CDKL2
Specificity:	This antibody detects CDKL2 at Center.
Formulation:	PBS State: Purified State: Liquid purified Ig fraction Preservative: 0.09% (W/V) Sodium Azide
Concentration:	lot specific
Purification:	Prepared by Saturated Ammonium Sulfate (SAS) precipitation followed by dialysis against PBS
Conjugation:	Unconjugated
Storage:	Store the antibody undiluted at 2-8°C for one month or (in aliquots) at -20°C for longer. Avoid repeated freezing and thawing.
Stability:	Shelf life: one year from despatch.
Gene Name:	cyclin dependent kinase like 2
Database Link:	Entrez Gene 8999 Human Q92772
Background:	CDKL2 belongs to the CDKL subfamily. CDKL2 has been suggested to be important in learning and memory. Multiple variants of CDKL2 are generated by alternative splicing and intraexonal termination, resulting in diverse carboxy-terminal regulatory domains. Two alternative promoters linked to distinct noncoding exons direct the expression of KKIAMRE.



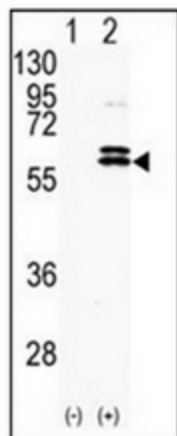
[View online »](#)

Synonyms: KKIAMRE

Product images:



Western blot analysis of CDKL2 antibody (Center) in 293, Jurkat cell line lysates (35ug/lane). CDKL2 (arrow) was detected using the purified Pab.



Western blot analysis of CDKL2 (arrow) using CDKL2 antibody (Center). 293 cell lysates (2 ug/lane) either nontransfected (Lane 1) or transiently transfected with the CDKL2 gene (Lane 2) (Origene Technologies).