

## Product datasheet for **AP13739PU-N**

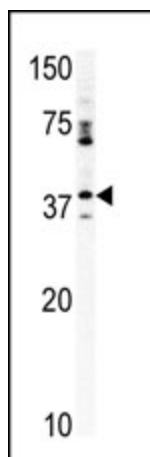
### CCRK (CDK20) (N-term) Rabbit Polyclonal Antibody

#### Product data:

|                       |   |
|-----------------------|---|
| Product Type:         | Primary Antibodies  |
| Applications:         | WB  |
| Recommended Dilution: | ELISA: 1/1,000.<br>Western blotting: 1/100 - 1/500.   |
| Reactivity:           | Human   |
| Host:                 | Rabbit  |
| Isotype:              | Ig  |
| Clonality:            | Polyclonal  |
| Immunogen:            | This antibody is generated from rabbits immunized with a KLH conjugated synthetic peptide selected from the N-terminal region of human CCRK.  |
| Specificity:          | This antibody reacts to CCRK.   |
| Formulation:          | PBS with 0.09% (W/V) sodium azide<br>State: Purified<br>State: Liquid purified Ig   |
| Concentration:        | lot specific  |
| Purification:         | Prepared by Saturated Ammonium Sulfate (SAS) precipitation followed by dialysis against PBS   |
| Conjugation:          | Unconjugated  |
| Storage:              | Store the antibody undiluted at 2-8°C for one month or (in aliquots) at -20°C for longer.<br>Avoid repeated freezing and thawing.   |
| Stability:            | Shelf life: one year from despatch.   |
| Gene Name:            | cyclin-dependent kinase 20  |
| Database Link:        | <a href="#">Entrez Gene 23552 Human Q8IZL9</a>  |
| Background:           | CCRK contains a kinase domain most closely related to the cyclin-dependent protein kinases. This protein is involved in cell growth and activates CDK2, a kinase involved in the control of the cell cycle, by phosphorylating residue Thr-160. |
| Synonyms:             | CAK-kinase p42  |



[View online »](#)

**Product images:**

Western blot analysis of anti-CCRK Pab in mouse kidney tissue lysate (35ug/lane). CCRK (arrow) was detected using the purified Pab (1:60 dilution).