

## Product datasheet for **AP13735PU-N**

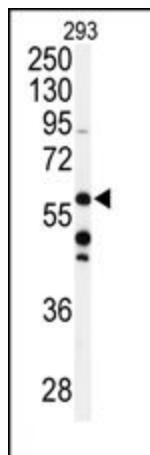
### ADCK3 (COQ8A) (C-term) Rabbit Polyclonal Antibody

#### Product data:

Product Type:	Primary Antibodies
Applications:	WB
Recommended Dilution:	ELISA: 1/1,000. Western blotting: 1/50 - 1/100.
Reactivity:	Human
Host:	Rabbit
Isotype:	Ig
Clonality:	Polyclonal
Immunogen:	This antibody is generated from rabbits immunized with a KLH conjugated synthetic peptide selected from the C-terminal region of human CAB1.
Specificity:	This antibody reacts to CAB1.
Formulation:	PBS with 0.09% (W/V) sodium azide State: Purified State: Liquid purified Ig
Concentration:	lot specific
Purification:	Prepared by Saturated Ammonium Sulfate (SAS) precipitation followed by dialysis against PBS
Conjugation:	Unconjugated
Storage:	Store the antibody undiluted at 2-8°C for one month or (in aliquots) at -20°C for longer. Avoid repeated freezing and thawing.
Stability:	Shelf life: one year from despatch.
Gene Name:	aarF domain containing kinase 3
Database Link:	<a href="#">Entrez Gene 56997 Human Q8NI60</a>
Background:	CAB1 is one of several proteins for which expression is induced by p53 expression. The S. pombe homolog, ABC1, is a chaperone-like protein essential for the proper conformation and functioning of protein complexes in the respiratory chain.
Synonyms:	ADCK3, PP265, Chaperone-ABC1-like



[View online »](#)

**Product images:**

Western blot analysis of anti-CABC1 Antibody (C-term) in 293 cell line lysates (35ug/lane). CABC1 (arrow) was detected using the purified Pab.