

Product datasheet for **AP13724PU-N**

ALS2CR2 (STRADB) (C-term) Rabbit Polyclonal Antibody

Product data:

Product Type:	Primary Antibodies
Applications:	WB
Recommended Dilution:	ELISA: 1/1,000. Western blotting: 1/50 - 1/100.
Reactivity:	Human
Host:	Rabbit
Isotype:	Ig
Clonality:	Polyclonal
Immunogen:	This antibody is generated from rabbits immunized with a KLH conjugated synthetic peptide selected from the C-terminal region of human ALS2CR2.
Specificity:	This antibody reacts to ALS2CR2.
Formulation:	PBS with 0.09% (W/V) sodium azide State: Purified State: Liquid purified Ig
Concentration:	lot specific
Purification:	Prepared by Saturated Ammonium Sulfate (SAS) precipitation followed by dialysis against PBS
Conjugation:	Unconjugated
Storage:	Store the antibody undiluted at 2-8°C for one month or (in aliquots) at -20°C for longer. Avoid repeated freezing and thawing.
Stability:	Shelf life: one year from despatch.
Gene Name:	STE20-related kinase adaptor beta
Database Link:	Entrez Gene 55437 Human Q9C0K7



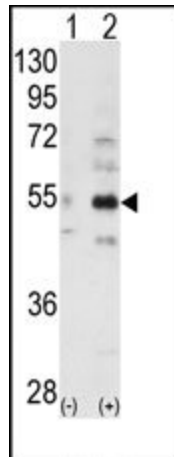
[View online »](#)

Background:

ALS2CR2 potentiates the antiapoptotic activity of XIAP by enhancing XIAP-mediated activation of JNK1 (MAPK8) and other JNK family members, but not by modulating XIAP-mediated caspase inhibition. Expression of a catalytically inactive TAK1 (MAP3K7) mutant blocks the XIAP/ALS2CR2 activation of JNK1. In vivo coprecipitation experiments show that both ALS2CR2 and XIAP interact with TAK1 and TRAF6. It has been proposed that XIAP-mediated protection from apoptosis utilizes both a JNK1 activation pathway that involves ALS2CR2 and a caspase inhibition pathway that is independent of ALS2CR2.

Synonyms:

Pseudokinase ALS2CR2, CALS-21, STRADB, ALS2CR2, PRO1038

Product images:

Western blot analysis of ALS2CR2 (arrow) using ALS2CR2 Antibody (C-term). 293 cell lysates (2 ug/lane) either nontransfected (Lane 1) or transiently transfected with the ALS2CR2 gene (Lane 2)