

## Product datasheet for **AP13696PU-N**

### LRRK2 Rabbit Polyclonal Antibody

#### Product data:

Product Type:	Primary Antibodies
Applications:	IHC, WB
Recommended Dilution:	<b>ELISA:</b> 1/1,000. <b>Western Blot:</b> 1/100-1/500. <b>Immunohistochemistry on Paraffin Sections:</b> 1/10-1/50.
Reactivity:	Human
Host:	Rabbit
Isotype:	Ig
Clonality:	Polyclonal
Immunogen:	This antibody is generated from rabbits immunized with a KLH conjugated synthetic peptide (10-30 aa in length) surrounding amino acid L893 of human LRRK2.
Specificity:	This antibody reacts to PARK8 (LRRK2).
Formulation:	PBS with 0.09% (W/V) Sodium Azide as preservative State: Purified State: Liquid purified Ig fraction
Concentration:	lot specific
Purification:	Prepared by Saturated Ammonium Sulfate (SAS) precipitation followed by dialysis against PBS
Conjugation:	Unconjugated
Storage:	Store the antibody undiluted at 2-8°C for one month or (in aliquots) at -20°C for longer. Avoid repeated freezing and thawing.
Stability:	Shelf life: one year from despatch.
Gene Name:	leucine-rich repeat kinase 2
Database Link:	<a href="#">Entrez Gene 120892 Human Q5S007</a>



[View online »](#)

**Background:**

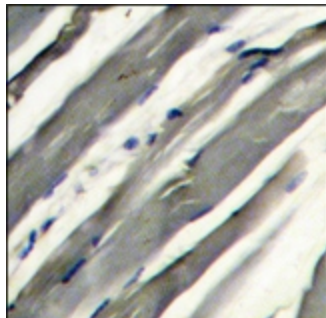
Parkinson is the second most common neurodegenerative disease after Alzheimers. About 1 percent of people over the age of 65 and 3 percent of people over the age of 75 are affected by the disease. The mutation is the most common cause of Parkinson's disease identified to date. LRRK2, a genetic mutation, was recently found linked to about 5 percent of inherited cases of Parkinson's disease. By high-resolution recombination mapping and candidate gene sequencing in 46 families, 6 disease-segregating mutations (5 missense and 1 putative splice site mutation). It may be central to the pathogenesis of several major neurodegenerative disorders associated with parkinsonism. LRRK2 belongs to the ROCO protein family and includes a protein kinase domain of the MAPKKK class and several other major functional domains.

**Synonyms:**

Dardarin

**Product images:**

PARK8 (LRRK2) Antibody detects over-expressed human LRRK2 protein.



Formalin-fixed and paraffin-embedded human hepatocarcinoma reacted with PARK8 (LRRK2) Antibody, which was peroxidase-conjugated to the secondary antibody, followed by DAB staining.