

Product datasheet for **AP13674PU-N**

CERK (C-term) Rabbit Polyclonal Antibody

Product data:

Product Type:	Primary Antibodies
Applications:	WB
Recommended Dilution:	ELISA: 1/1,000. Western blotting: 1/100 - 1/500.
Reactivity:	Human, Mouse
Host:	Rabbit
Isotype:	Ig
Clonality:	Polyclonal
Immunogen:	This antibody is generated from rabbits immunized with a KLH conjugated synthetic peptide selected from the C-terminal region of human CERK.
Specificity:	This antibody reacts to CERK.
Formulation:	PBS with 0.09% (W/V) sodium azide State: Purified State: Liquid purified Ig
Concentration:	lot specific
Purification:	Protein G column, eluted with high and low pH buffers and neutralized immediately, followed by dialysis against PBS
Conjugation:	Unconjugated
Storage:	Store the antibody undiluted at 2-8°C for one month or (in aliquots) at -20°C for longer. Avoid repeated freezing and thawing.
Stability:	Shelf life: one year from despatch.
Gene Name:	ceramide kinase
Database Link:	Entrez Gene 64781 Human Q8TCT0



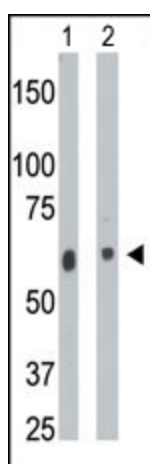
[View online »](#)

Background:

Ceramide kinases convert the sphingolipid metabolite ceramide into ceramide-1-phosphate, both key mediators of cellular apoptosis and survival. Ceramide metabolism plays an essential role in the viability of neuronal cells, the membranes of which are particularly rich in sphingolipids. CERK catalyzes specifically the phosphorylation of ceramide to form ceramide 1-phosphate. This enzyme acts efficiently on natural and analog ceramides (C6, C8, C16 ceramides, and C8 dihydroceramide), and to a lesser extent on C2-ceramide and C6-dihydroceramide, but not on other lipids, such as various sphingosines. High level expression is noted in heart, brain, skeletal muscle, kidney and liver; moderate expression in peripheral blood leukocytes and thymus; and low expression in spleen, small intestine, placenta and lung.

Synonyms:

hCERK, Acylsphingosine kinase, Lipid kinase 4, KIAA1646, LK4

Product images:

The anti-CERK Pab is used in Western blot to detect CERK in mouse heart tissue lysate (Lane 1) and A2058 cell lysate (Lane 2).