

## Product datasheet for **AP13662PU-N**

### **GALK2 (N-term) Rabbit Polyclonal Antibody**

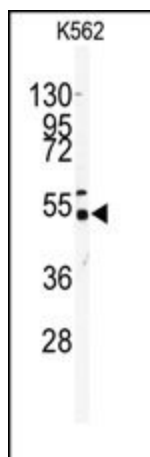
#### **Product data:**

<b>Product Type:</b>	Primary Antibodies
<b>Applications:</b>	WB
<b>Recommended Dilution:</b>	ELISA: 1/1,000. Western blotting: 1/100 - 1/500. Flow cytometry.
<b>Reactivity:</b>	Human, Mouse
<b>Host:</b>	Rabbit
<b>Isotype:</b>	Ig
<b>Clonality:</b>	Polyclonal
<b>Immunogen:</b>	This antibody is generated from rabbits immunized with a KLH conjugated synthetic peptide selected from the N-terminal region of human GALK2.
<b>Specificity:</b>	This antibody reacts to GALK2.
<b>Formulation:</b>	PBS with 0.09% (W/V) sodium azide State: Purified State: Liquid purified Ig
<b>Concentration:</b>	lot specific
<b>Purification:</b>	Protein G column, eluted with high and low pH buffers and neutralized immediately, followed by dialysis against PBS
<b>Conjugation:</b>	Unconjugated
<b>Storage:</b>	Store the antibody undiluted at 2-8°C for one month or (in aliquots) at -20°C for longer. Avoid repeated freezing and thawing.
<b>Stability:</b>	Shelf life: one year from despatch.
<b>Gene Name:</b>	galactokinase 2
<b>Database Link:</b>	<a href="#">Entrez Gene 2585 Human Q01415</a>
<b>Background:</b>	GALK2 is a highly efficient N-acetylgalactosamine (GalNAc) kinase, which has galactokinase activity when galactose is present at high concentrations.
<b>Synonyms:</b>	GalNAc kinase, GALK2, GK2



[View online »](#)

## Product images:



Western blot analysis of anti-GALK2 Antibody (N-term) in K562 cell line lysates (35ug/lane). GALK2 (arrow) was detected using the purified Pab