

Product datasheet for **AP13661PU-N**

GALK1 (C-term) Rabbit Polyclonal Antibody

Product data:

Product Type:	Primary Antibodies
Applications:	WB
Recommended Dilution:	ELISA: 1/1,000. Western blotting 1/100 - 1/500. Flow cytometry.
Reactivity:	Human, Mouse
Host:	Rabbit
Isotype:	Ig
Clonality:	Polyclonal
Immunogen:	This antibody is generated from rabbits immunized with a KLH conjugated synthetic peptide selected from the C-terminal region of human GALK1.
Specificity:	This antibody reacts to GALK1.
Formulation:	PBS with 0.09% (W/V) sodium azide State: Purified State: Liquid purified Ig
Concentration:	lot specific
Purification:	Protein G column, eluted with high and low pH buffers and neutralized immediately, followed by dialysis against PBS
Conjugation:	Unconjugated
Storage:	Store the antibody undiluted at 2-8°C for one month or (in aliquots) at -20°C for longer. Avoid repeated freezing and thawing.
Stability:	Shelf life: one year from despatch.
Gene Name:	galactokinase 1
Database Link:	Entrez Gene 2584 Human P51570

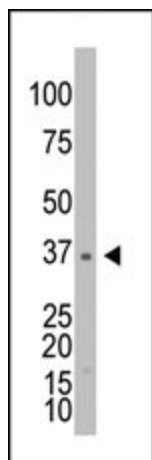


[View online »](#)

Background: Galactokinase is a major enzyme for the metabolism of galactose and its deficiency causes congenital cataracts in the adult population. GALK1 sequence shares the greatest level of conservation, 44.5% identity with that from E. coli and 34.6% amino acid identity with the product of the human GALK2 gene.

Synonyms: GALK1, GALK, Galactose kinase

Product images:



The anti-GALK1 Pab is used in Western blot to detect GALK1 in Y79 cell lysate.