

Product datasheet for **AP13652PU-N**

Ilk (C-term) Rabbit Polyclonal Antibody

Product data:

| | |
|-----------------------|---|
| Product Type: | Primary Antibodies |
| Applications: | WB |
| Recommended Dilution: | ELISA: 1/1,000. Western blotting: 1/100 - 1/500. Flow cytometry. |
| Reactivity: | Human, Mouse |
| Host: | Rabbit |
| Isotype: | Ig |
| Clonality: | Polyclonal |
| Immunogen: | This antibody is generated from rabbits immunized with a KLH conjugated synthetic peptide selected from the C-terminal region of human ILK2/ILK1. |
| Specificity: | This antibody reacts to ILK2/ILK1. |
| Formulation: | PBS with 0.09% (W/V) sodium azide State: Purified State: Liquid purified Ig |
| Concentration: | lot specific |
| Purification: | Protein G column, eluted with high and low pH buffers and neutralized immediately, followed by dialysis against PBS |
| Conjugation: | Unconjugated |
| Storage: | Store the antibody undiluted at 2-8°C for one month or (in aliquots) at -20°C for longer. Avoid repeated freezing and thawing. |
| Stability: | Shelf life: one year from despatch. |
| Gene Name: | integrin linked kinase |
| Database Link: | Entrez Gene 3611 Human Entrez Gene 16202 Mouse O55222 |

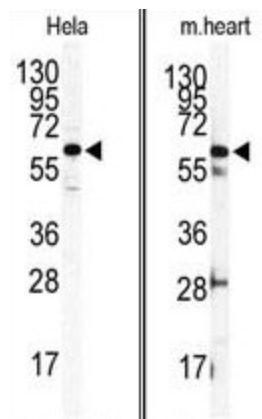
[View online »](#)

Background:

Transduction of extracellular matrix signals through integrins influences intracellular and extracellular functions, and appears to require interaction of integrin cytoplasmic domains with cellular proteins. Integrin-linked kinase (ILK) is an ankyrin repeat containing 51 kDa receptor-proximate serine-threonine kinase (1), with a reported migration rate of 59K. This 451 amino acid protein interacts with the cytoplasmic domain of the beta-1 integrin subunit and contains sequence motifs found in pleckstrin homology domains capable of interacting with phosphoinositide lipids. ILK is an upstream regulator of Pi(3)K dependant activation of protein kinase B (PKB/AKT) and inhibition of glycogen synthase kinase 3 (GSK-3). ILK2 expression is associated with mediation of cell architecture, adhesion to integrin substrates and anchorage-dependent growth in epithelial cells. ILK2 is overexpressed in some highly invasive tumor cell lines.

Synonyms:

ILK-1, ILK-2, p59ILK, ILK, ILK1, ILK2

Product images:


(LEFT) Western blot analysis of anti-ILK2/ILK1 Antibody (C-term) in Hela cell line lysates (35ug/lane). ILK2 (arrow) was detected using the purified Pab. (RIGHT) Western blot analysis of anti-ILK2/ILK1 Antibody (C-term) in mouse heart tissue lysates (35ug/lane). ILK2 (arrow) was detected using the purified Pab.