

Product datasheet for **AP13643PU-N**

STK38 (C-term) Rabbit Polyclonal Antibody

Product data:

Product Type:	Primary Antibodies
Applications:	WB
Recommended Dilution:	ELISA: 1/1,000. Western Blot: 1/250 - 1/500.
Reactivity:	Human
Host:	Rabbit
Isotype:	Ig
Clonality:	Polyclonal
Immunogen:	This antibody is generated from rabbits immunized with a KLH conjugated synthetic peptide selected from the C-terminal region of human STK38.
Specificity:	This antibody reacts to STK38.
Formulation:	PBS with 0.09% (W/V) sodium azide State: Purified State: Liquid purified Ig
Concentration:	lot specific
Purification:	Protein G column, eluted with high and low pH buffers and neutralized immediately, followed by dialysis against PBS
Conjugation:	Unconjugated
Storage:	Store the antibody undiluted at 2-8°C for one month or (in aliquots) at -20°C for longer. Avoid repeated freezing and thawing.
Stability:	Shelf life: one year from despatch.
Gene Name:	serine/threonine kinase 38
Database Link:	Entrez Gene 11329 Human Q15208



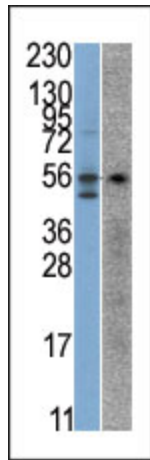
[View online »](#)

Background:

Stk38, also known as NUCLEAR DBF2-RELATED PROTEIN, contains 1 protein kinase domain that interacts with mob1 and mob2. The homodimeric s100b binds to two molecules of stk38. It is ubiquitously expressed with highest levels observed in peripheral blood leukocytes. Stk38 is activated by binding of s100b which releases autoinhibitory n-lobe interactions, enabling ATP to bind and the autophosphorylation of ser-281. thr-444 then undergoes calcium-dependent phosphorylation by an upstream kinase. Interactions between phosphorylated thr-444 and the n-lobe promote additional structural changes that complete the activation of the kinase. Autoinhibition is also released by the binding of mob1/mobk1a and mob2/hcca2 to the n-terminal of stk38.

Synonyms:

Serine/threonine-protein kinase 38, NDR1

Product images:


The anti-STK38 Pab is used in Western blot to detect STK38 in SK-Br-3 (left) and Jurkat (right) cell line lysates.