

Product datasheet for **AP13640PU-N**

CKMT2 (C-term) Rabbit Polyclonal Antibody

Product data:

Product Type:	Primary Antibodies
Applications:	WB
Recommended Dilution:	ELISA: 1/1,000. Western blotting: 1/100-1/500. Flow Cytometry.
Reactivity:	Human, Mouse
Host:	Rabbit
Isotype:	Ig
Clonality:	Polyclonal
Immunogen:	This antibody is generated from rabbits immunized with a KLH conjugated synthetic peptide between 390~419 amino acids from the C-terminal region of Human CKMT2.
Specificity:	This antibody recognizes CKMT2.
Formulation:	PBS with 0.09% (W/V) Sodium Azide as preservative State: Purified State: Liquid purified Ig fraction
Concentration:	lot specific
Purification:	Protein G Chromatography, eluted with high and low pH buffers and neutralized immediately, followed by dialysis against PBS
Conjugation:	Unconjugated
Storage:	Store the antibody undiluted at 2-8°C for one month or (in aliquots) at -20°C for longer. Avoid repeated freezing and thawing.
Stability:	Shelf life: one year from despatch.
Gene Name:	creatine kinase, mitochondrial 2
Database Link:	Entrez Gene 1160 Human P17540



[View online »](#)

Background:

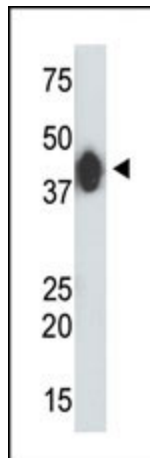
Mitochondrial creatine kinase (MtCK) is responsible for the transfer of high energy phosphate from mitochondria to the cytosolic carrier, creatine. It belongs to the creatine kinase isoenzyme family. It exists as two isoenzymes, sarcomeric MtCK and ubiquitous MtCK, encoded by separate genes. Mitochondrial creatine kinase occurs in two different oligomeric forms: dimers and octamers, in contrast to the exclusively dimeric cytosolic creatine kinase isoenzymes. Sarcomeric mitochondrial creatine kinase has 80% homology with the coding exons of ubiquitous mitochondrial creatine kinase. This gene contains sequences homologous to several motifs that are shared among some nuclear genes encoding mitochondrial proteins and thus may be essential for the coordinated activation of these genes during mitochondrial biogenesis.

Synonyms:

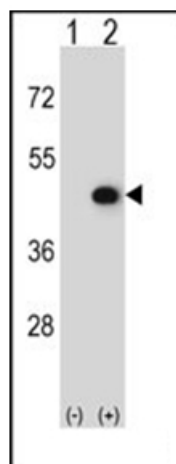
S-MtCK, Mib-CK, Creatine kinase S

Note:

Calculated MW: 47520 Da

Product images:


The anti-CKMT2 Pab is used in Western blot to detect CKMT2 in mouse muscle tissue lysate.



Western blot analysis of CKMT2 (arrow) using CKMT2 Antibody. 293 cell lysates (2 ug/Lane) either nontransfected (Lane 1) or transiently transfected (Lane 2) with the CKMT2 gene.