

Product datasheet for **AP13631PU-N**

ethanolamine kinase (ETNK1) (N-term) Rabbit Polyclonal Antibody

Product data:

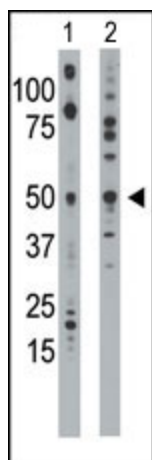
Product Type:	Primary Antibodies
Applications:	WB
Recommended Dilution:	ELISA: 1/1,000. Western blotting: 1/100 - 1/500. Flow cytometry.
Reactivity:	Human, Mouse
Host:	Rabbit
Isotype:	Ig
Clonality:	Polyclonal
Immunogen:	This antibody is generated from rabbits immunized with a KLH conjugated synthetic peptide selected from the N-terminal region of human EK11.
Specificity:	This antibody reacts to Ethanolamine Kinase (EK11).
Formulation:	PBS with 0.09% (W/V) sodium azide State: Purified State: Liquid purified Ig
Concentration:	lot specific
Purification:	Protein G column, eluted with high and low pH buffers and neutralized immediately, followed by dialysis against PBS
Conjugation:	Unconjugated
Storage:	Store the antibody undiluted at 2-8°C for one month or (in aliquots) at -20°C for longer. Avoid repeated freezing and thawing.
Stability:	Shelf life: one year from despatch.
Gene Name:	ethanolamine kinase 1
Database Link:	Entrez Gene 55500 Human Q9HBU6
Background:	Ethanolamine kinase 1 (EK11), functions in the first committed step of the phosphatidylethanolamine synthesis pathway. This cytosolic enzyme is specific for ethanolamine and exhibits negligible kinase activity on choline.



[View online »](#)

Synonyms: ETNK1, EK11

Product images:



The anti-EK11 Pab is used in Western blot to detect EK11 in mouse bladder tissue lysate (Lane 1) and 293 cell lysate (Lane 2).