

Product datasheet for **AP13618PU-N**

Creatine kinase B type (CKB) Rabbit Polyclonal Antibody

Product data:

Product Type:	Primary Antibodies
Applications:	WB
Recommended Dilution:	ELISA: 1/1,000. Western blotting: 1/100 - 1/500. Flow cytometry.
Reactivity:	Human, Mouse
Host:	Rabbit
Isotype:	Ig
Clonality:	Polyclonal
Immunogen:	This antibody is generated from rabbits immunized with a KLH conjugated synthetic peptide selected from the center region of human CKB.
Specificity:	This antibody reacts to Creatine Kinase BB (CKB).
Formulation:	PBS with 0.09% (W/V) sodium azide State: Purified State: Liquid purified Ig
Concentration:	lot specific
Purification:	Protein G column, eluted with high and low pH buffers and neutralized immediately, followed by dialysis against PBS
Conjugation:	Unconjugated
Storage:	Store the antibody undiluted at 2-8°C for one month or (in aliquots) at -20°C for longer. Avoid repeated freezing and thawing.
Stability:	Shelf life: one year from despatch.
Gene Name:	creatine kinase B
Database Link:	Entrez Gene 1152 Human P12277



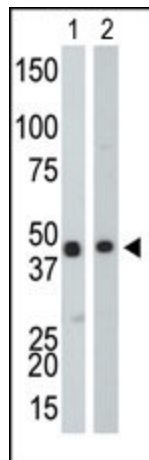
[View online »](#)

Background:

Creatine Kinase (CK) is a dimeric enzyme composed of either M- or B-type subunits. The resulting isoenzymes are expressed at varying levels in different tissues. CK-BB, a cytoplasmic predominantly found in brain tissues, participates in energy homeostasis, reversibly catalyzing the transfer of a phosphate group between ATP and target proteins such as a creatine phosphate. CK-BB exists in normally negligible amounts in the serum of adults, overexpression of CK-BB is associated with cancers of the breast, ovary, prostate, colon, and in small-cell lung cancer. Global assessment of changes in serum levels of CK-BB, CK-MB and CK-MM, are used as a marker for myocardial infarction.

Synonyms:

Creatine kinase B-type, Creatine kinase B chain, B-CK, Creatine kinase BB, CKB

Product images:

The anti-CKB Pab is used in Western blot to detect CKB in Y79 cell lysate (Lane 1) and mouse colon tissue lysate (Lane 2).