

Product datasheet for **AP13579PU-N**

PDK1 (N-term) Rabbit Polyclonal Antibody

Product data:

Product Type:	Primary Antibodies
Applications:	WB
Recommended Dilution:	ELISA: 1/1,000. Western blotting: 1/100 - 1/500. Flow cytometry.
Reactivity:	Human, Mouse
Host:	Rabbit
Isotype:	Ig
Clonality:	Polyclonal
Immunogen:	This antibody is generated from rabbits immunized with a KLH conjugated synthetic peptide selected from the N-terminal region of human PDK1.
Specificity:	This antibody reacts to PDK1.
Formulation:	PBS with 0.09% (W/V) sodium azide State: Purified State: Liquid purified Ig
Concentration:	lot specific
Purification:	Protein G column, eluted with high and low pH buffers and neutralized immediately, followed by dialysis against PBS
Conjugation:	Unconjugated
Storage:	Store the antibody undiluted at 2-8°C for one month or (in aliquots) at -20°C for longer. Avoid repeated freezing and thawing.
Stability:	Shelf life: one year from despatch.
Gene Name:	pyruvate dehydrogenase kinase 1
Database Link:	Entrez Gene 5163 Human Q15118



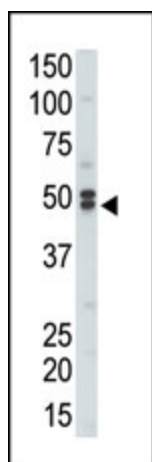
[View online »](#)

Background:

Pyruvate dehydrogenase (PDH) is a mitochondrial multienzyme complex that catalyzes the oxidative decarboxylation of pyruvate and is one of the major enzymes responsible for the regulation of homeostasis of carbohydrate fuels in mammals. The enzymatic activity is regulated by a phosphorylation/dephosphorylation cycle. Phosphorylation of PDH by a specific pyruvate dehydrogenase kinase (PDK) results in inactivation.

Synonyms:

Pyruvate dehydrogenase kinase isoform 1

Product images:

The anti-PDK1 Pab is used in Western blot to detect PDK1 in mouse kidney tissue lysate.