

Product datasheet for **AP13576PU-N**

LATS2 (Center) Rabbit Polyclonal Antibody

Product data:

Product Type:	Primary Antibodies
Applications:	IHC, WB
Recommended Dilution:	ELISA: 1/1,000. Western blotting: 1/1,000. Immunohistochemistry: 1/10 - 1/50.
Reactivity:	Human, Mouse
Host:	Rabbit
Isotype:	Ig
Clonality:	Polyclonal
Immunogen:	KLH conjugated synthetic peptide between 228-258 amino acids from the center region of human LATS2.
Specificity:	This antibody reacts to LATS2.
Formulation:	PBS with 0.09% (W/V) sodium azide State: Purified State: Liquid purified Ig
Concentration:	lot specific
Purification:	Saturated Ammonium Sulfate (SAS) Precipitation followed by Dialysis against PBS
Conjugation:	Unconjugated
Storage:	Store undiluted at 2-8°C for one month or (in aliquots) at -20°C for longer. Avoid repeated freezing and thawing.
Stability:	Shelf life: one year from despatch.
Gene Name:	large tumor suppressor kinase 2
Database Link:	Entrez Gene 26524 Human Q9NRM7



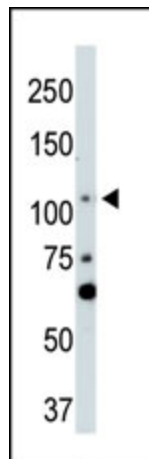
[View online »](#)

Background:

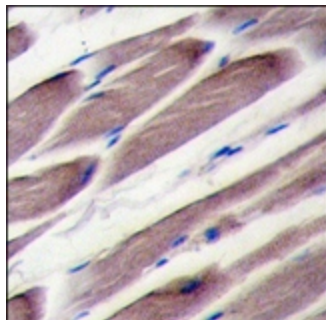
LATS2 is a serine/threonine protein kinase belonging to the LATS tumor suppressor family. This protein localizes to centrosomes during interphase, and early and late metaphase. It interacts with the centrosomal proteins aurora-A and ajuba and is required for accumulation of gamma-tubulin and spindle formation at the onset of mitosis. It also interacts with a negative regulator of p53 and may function in a positive feedback loop with p53 that responds to cytoskeleton damage. Additionally, it can function as a co-repressor of androgen-responsive gene expression.

Synonyms:

LATS2, KPM, Serine/threonine-protein kinase LATS2, EC=2.7.11.1, Large tumor suppressor homolog 2, Serine/threonine-protein kinase kpm, Kinase phosphorylated during mitosis protein, Warts-like kinase

Product images:

The anti-LATS2 Pab is used in Western blot to detect LATS2 in NIH/3T3 cell lysate.



Formalin-fixed and paraffin-embedded human skeletal muscle tissue reacted with LATS2 antibody (Center), which was peroxidase-conjugated to the secondary antibody, followed by DAB staining.