

## Product datasheet for **AP13554PU-N**

### SCYL2 (C-term) Rabbit Polyclonal Antibody

#### Product data:

Product Type:	Primary Antibodies
Applications:	IHC, WB
Recommended Dilution:	ELISA: 1/1,000. Western blotting: 1/100 - 1/500. Immunohistochemistry: 1/10 - 1/50.
Reactivity:	Human, Mouse
Host:	Rabbit
Isotype:	Ig
Clonality:	Polyclonal
Immunogen:	This antibody is generated from rabbits immunized with a KLH conjugated synthetic peptide selected from the C-terminal region of human SCYL2.
Specificity:	This antibody reacts to SCYL2.
Formulation:	PBS with 0.09% (W/V) sodium azide State: Purified State: Liquid purified Ig
Concentration:	lot specific
Purification:	Protein G column, eluted with high and low pH buffers and neutralized immediately, followed by dialysis against PBS
Conjugation:	Unconjugated
Storage:	Store the antibody undiluted at 2-8°C for one month or (in aliquots) at -20°C for longer. Avoid repeated freezing and thawing.
Stability:	Shelf life: one year from despatch.
Gene Name:	SCY1 like pseudokinase 2
Database Link:	<a href="#">Entrez Gene 55681 Human Q6P3W7</a>



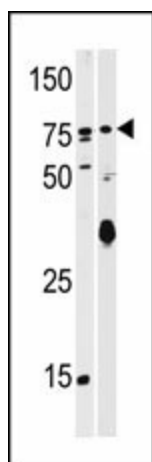
[View online »](#)

**Background:**

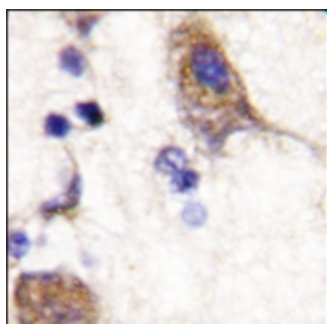
SCYL2 is a component of AP2-containing clathrin coated structures at the plasma membrane or of endocytic coated vesicles. SCYL2 is a probable serine/threonine-protein kinase that phosphorylates, in vitro, the beta2-subunit of the plasma membrane adapter complex AP2 and other proteins in presence of poly-L-lysine. SCYL2 may also regulate clathrin-dependent trafficking between the TGN and/or the endosomal system.

**Synonyms:**

SCY1-like protein 2

**Product images:**

Western blot analysis of anti-SCYL2 Pab in T47D (left) and mouse brain (right) tissue lysates (35ug/lane). SCYL2 (arrow) was detected using the purified Pab (1:60 dilution).



Formalin-fixed and paraffin-embedded human brain tissue reacted with SCYL2 (C-term), which was peroxidase-conjugated to the secondary antibody, followed by DAB staining.