

Product datasheet for **AP13550PU-N**

PKC gamma (PRKCG) (C-term) Rabbit Polyclonal Antibody

Product data:

Product Type:	Primary Antibodies
Applications:	IHC, WB
Recommended Dilution:	Western blotting: 1/1000. Immunohistochemistry: 1/10-1/50.
Reactivity:	Human, Monkey, Mouse
Host:	Rabbit
Isotype:	Ig
Clonality:	Polyclonal
Immunogen:	KLH conjugated synthetic peptide between 305-336 amino acids from the C-terminal region of Human PKC gamma.
Specificity:	This antibody recognizes PKC gamma.
Formulation:	PBS with 0.09% (W/V) sodium azide State: Purified State: Liquid purified Ig fraction
Concentration:	lot specific
Purification:	Saturated Ammonium Sulfate (SAS) precipitation followed by dialysis against PBS
Conjugation:	Unconjugated
Storage:	Store undiluted at 2-8°C for one month or (in aliquots) at -20°C for longer. Avoid repeated freezing and thawing.
Stability:	Shelf life: one year from despatch.
Gene Name:	protein kinase C gamma
Database Link:	Entrez Gene 5582 Human P05129



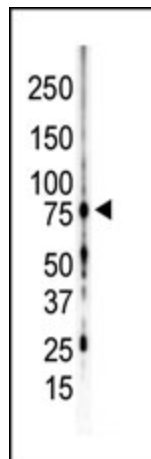
[View online »](#)

Background:

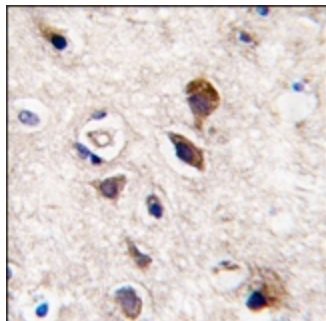
Protein kinase C (PKC) is a family of serine- and threonine-specific protein kinases that can be activated by calcium and second messenger diacylglycerol. PKC family members phosphorylate a wide variety of protein targets and are known to be involved in diverse cellular signaling pathways. PKC also serve as major receptors for phorbol esters, a class of tumor promoters. Each member of the PKC family has a specific expression profile and is believed to play distinct roles in cells. PKC gamma is one of the PKC family members. This protein kinase is expressed solely in the brain and spinal cord and its localization is restricted to neurons. It has been demonstrated that several neuronal functions, including long term potentiation (LTP) and long term depression (LTD), specifically require this kinase. Knockout studies in mice also suggest that this kinase may be involved in neuropathic pain development. Defects in this protein have been associated with neurodegenerative disorder spinocerebellar ataxia-14 (SCA14).

Synonyms:

PKC-gamma, PKC gamma, PKCG, PKCC, Protein kinase C gamma type

Product images:


Western blot analysis of anti-PKC gamma C-term Pab in mouse brain lysate. PKC gamma (arrow) was detected using purified Pab. Secondary HRP-anti-rabbit was used for signal visualization with chemiluminescence.



Formalin-fixed and paraffin-embedded human brain tissue reacted with PKC gamma antibody (C-term), which was peroxidase-conjugated to the secondary antibody, followed by DAB staining.