

## Product datasheet for **AP13546PU-N**

### PXK (Center) Rabbit Polyclonal Antibody

#### Product data:

Product Type:	Primary Antibodies
Applications:	WB
Recommended Dilution:	ELISA: 1/1,000. Western blotting: 1/100 - 1/500.
Reactivity:	Human
Host:	Rabbit
Isotype:	Ig
Clonality:	Polyclonal
Immunogen:	This antibody is generated from rabbits immunized with a KLH conjugated synthetic peptide selected from the center-terminal region of human PXK.
Specificity:	This antibody reacts to PXK.
Formulation:	PBS with 0.09% (W/V) sodium azide State: Purified State: Liquid purified Ig
Concentration:	lot specific
Purification:	Protein G column, eluted with high and low pH buffers and neutralized immediately, followed by dialysis against PBS
Conjugation:	Unconjugated
Storage:	Store the antibody undiluted at 2-8°C for one month or (in aliquots) at -20°C for longer. Avoid repeated freezing and thawing.
Stability:	Shelf life: one year from despatch.
Gene Name:	PX domain containing serine/threonine kinase like
Database Link:	<a href="#">Entrez Gene 54899 Human Q7Z7A4</a>
Background:	PXK is widely expressed in all tissues examined except in heart. It binds to and modulates brain Na,K-ATPase subunits ATP1B1 and ATP1B3 and may thereby participate in the regulation of electrical excitability and synaptic transmission. However, the protein kinase domain is predicted to be catalytically inactive.

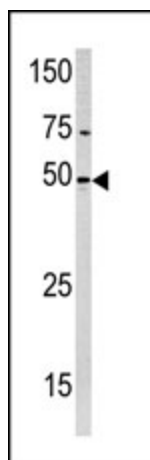


[View online »](#)

Synonyms: MONaKA, FLJ20335

Protein Families: Druggable Genome, Protein Kinase

### Product images:



Western blot analysis of anti-PXK Pab in HeLa cell line lysate (35ug/lane). PXK (arrow) was detected using the purified Pab (1:60 dilution).