

Product datasheet for **AP13533PU-N**

RIOK2 (Center) Rabbit Polyclonal Antibody

Product data:

Product Type:	Primary Antibodies
Applications:	WB
Recommended Dilution:	ELISA: 1/1,000. Western blotting: 1/100 - 1/500.
Reactivity:	Human
Host:	Rabbit
Isotype:	Ig
Clonality:	Polyclonal
Immunogen:	This antibody is generated from rabbits immunized with a KLH conjugated synthetic peptide selected from the center region of human RIOK2.
Specificity:	This antibody reacts to RIOK2.
Formulation:	PBS with 0.09% (W/V) sodium azide State: Purified State: Liquid purified Ig
Concentration:	lot specific
Purification:	Protein G column, eluted with high and low pH buffers and neutralized immediately, followed by dialysis against PBS
Conjugation:	Unconjugated
Storage:	Store the antibody undiluted at 2-8°C for one month or (in aliquots) at -20°C for longer. Avoid repeated freezing and thawing.
Stability:	Shelf life: one year from despatch.
Gene Name:	RIO kinase 2
Database Link:	Entrez Gene 55781 Human Q9BVS4



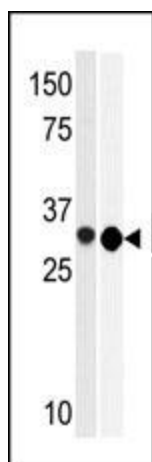
[View online »](#)

Background:

RIOK2 belongs to the protein kinase superfamily; RIO-type Ser/Thr kinase family. Serine/threonine protein kinases, such as RIOK2, phosphorylate the OH group of serine or threonine (which have similar sidechains). Activity of these protein kinases can be regulated by specific events (e.g. DNA damage), as well as numerous chemical signals, including cAMP/cGMP, Diacylglycerol, and Ca²⁺/calmodulin.

Synonyms:

RIO kinase 2

Product images:

This Western blot recognizes the derivative of the full length RIOK2. Western blot analysis of anti-RIOK2 Pab in Jurkat (left) and T47D (right) cell line lysates (35ug/lane). RIOK2 (arrow) was detected using the purified Pab (1:60 dilution).