

Product datasheet for **AP13528PU-N**

GRK3 (C-term) Rabbit Polyclonal Antibody

Product data:

Product Type:	Primary Antibodies
Applications:	WB
Recommended Dilution:	ELISA: 1/1,000. Western blotting: 1/100 - 1/500. Flow cytometry.
Reactivity:	Human, Mouse
Host:	Rabbit
Isotype:	Ig
Clonality:	Polyclonal
Immunogen:	This antibody is generated from rabbits immunized with a KLH conjugated synthetic peptide selected from the C-term region of human GRK3.
Specificity:	This antibody reacts to GRK3.
Formulation:	PBS with 0.09% (W/V) sodium azide State: Purified State: Liquid purified Ig
Concentration:	lot specific
Purification:	Protein G column, eluted with high and low pH buffers and neutralized immediately, followed by dialysis against PBS
Conjugation:	Unconjugated
Storage:	Store the antibody undiluted at 2-8°C for one month or (in aliquots) at -20°C for longer. Avoid repeated freezing and thawing.
Stability:	Shelf life: one year from despatch.
Gene Name:	G protein-coupled receptor kinase 3
Database Link:	Entrez Gene 157 Human P35626



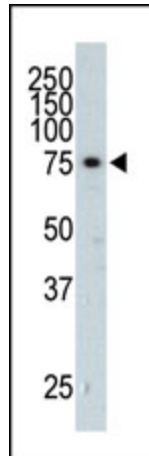
[View online »](#)

Background:

The beta-adrenergic receptor kinase specifically phosphorylates the agonist-occupied form of the beta-adrenergic and related G protein-coupled receptors. Overall, the ADRBK2 enzyme, also known as GRK3, has 85% amino acid similarity with ADRBK1, with the protein kinase catalytic domain having 95% similarity. The ADRBK2 mRNA is approximately 8 kilobases with a distribution similar to that of ADRBK1. These data suggest the existence of a family of receptor kinases which may serve broadly to regulate receptor function.

Synonyms:

Beta-adrenergic receptor kinase 2, BARK2, GRK3

Product images:

The anti-GRK3 Pab is used in Western blot to detect GRK3 in SK-OV-3 cell lysate (Lane 1) and mouse heart tissue lysate (Lane 2).