

## Product datasheet for **AP13511PU-N**

### **MTMR8 (C-term) Rabbit Polyclonal Antibody**

#### **Product data:**

<b>Product Type:</b>	Primary Antibodies
<b>Applications:</b>	IHC, WB
<b>Recommended Dilution:</b>	ELISA: 1/1,000. Western blotting: 1/100 - 1/500. Immunohistochemistry: 1/10 - 1/50.
<b>Reactivity:</b>	Human, Mouse
<b>Host:</b>	Rabbit
<b>Isotype:</b>	Ig
<b>Clonality:</b>	Polyclonal
<b>Immunogen:</b>	This antibody is generated from rabbits immunized with a KLH conjugated synthetic peptide selected from the C-terminal region of human MTMR8.
<b>Specificity:</b>	This antibody reacts to MTMR8.
<b>Formulation:</b>	PBS with 0.09% (W/V) sodium azide State: Purified State: Liquid purified Ig
<b>Concentration:</b>	lot specific
<b>Purification:</b>	Protein G column, eluted with high and low pH buffers and neutralized immediately, followed by dialysis against PBS
<b>Conjugation:</b>	Unconjugated
<b>Storage:</b>	Store the antibody undiluted at 2-8°C for one month or (in aliquots) at -20°C for longer. Avoid repeated freezing and thawing.
<b>Stability:</b>	Shelf life: one year from despatch.
<b>Gene Name:</b>	myotubularin related protein 8
<b>Database Link:</b>	<a href="#">Entrez Gene 55613 Human</a> <a href="#">Q96EF0</a>



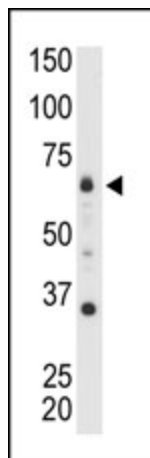
[View online »](#)

**Background:**

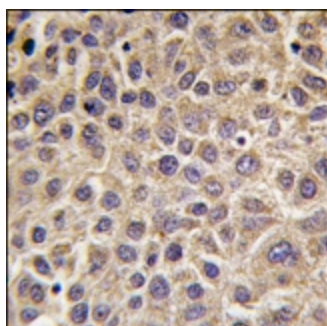
MTMR8 is a myotubularin-related protein that is atypical to most other members of the myotubularin-related protein family because it has no dual-specificity phosphatase domain. The encoded protein contains a double-helical motif similar to the SET interaction domain, which is thought to have a role in the control of cell proliferation. In mouse, a protein similar to the encoded protein binds with MTMR7, and together they dephosphorylate phosphatidylinositol 3-phosphate and inositol 1,3-bisphosphate.

**Synonyms:**

Myotubularin-related protein 8

**Product images:**

The anti-MTMR8 C-term Pab is used in Western blot to detect MTMR8 in mouse heart tissue lysate.



Formalin-fixed and paraffin-embedded human hepatocarcinoma tissue reacted with MTMR8 antibody (C-term), which was peroxidase-conjugated to the secondary antibody, followed by DAB staining.