

## Product datasheet for **AP13481PU-N**

### **PARK7 (N-term) Rabbit Polyclonal Antibody**

#### **Product data:**

Product Type:	Primary Antibodies
Applications:	ELISA, IF, WB
Recommended Dilution:	<b>ELISA:</b> 1/1,000. <b>Western blotting:</b> 1/1000. <b>Immunofluorescence:</b> 1/10-1/50.
Reactivity:	Human, Mouse
Host:	Rabbit
Isotype:	Ig
Clonality:	Polyclonal
Immunogen:	KLH conjugated synthetic peptide between 1-30 amino acids from the N-terminal region of human Park7 (DJ-1).
Specificity:	This antibody reacts to PARK7 (DJ-1).
Formulation:	PBS with 0.09% (W/V) sodium azide State: Purified State: Liquid purified Ig
Concentration:	lot specific
Purification:	Prepared by Saturated Ammonium Sulfate (SAS) precipitation followed by dialysis against PBS
Conjugation:	Unconjugated
Storage:	Store the antibody undiluted at 2-8°C for one month or (in aliquots) at -20°C for longer. Avoid repeated freezing and thawing.
Stability:	Shelf life: one year from despatch.
Gene Name:	Parkinsonism associated deglycase
Database Link:	<a href="#">Entrez Gene 11315 Human Q99497</a>



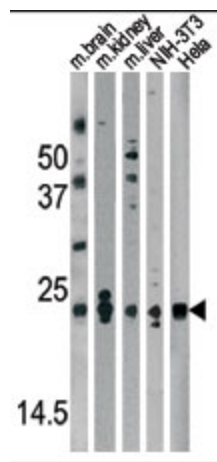
[View online »](#)

**Background:**

Park 7 acts as positive regulator of androgen receptor-dependent transcription, and may function as redox-sensitive chaperone and as sensor for oxidative stress, as well as preventing aggregation of SNCA. This protein has been shown to protect neurons against oxidative stress and cell death, and to play a role in fertilization. Park7 is detected in tau inclusions in brains from neurodegenerative disease patients, and is generally highly expressed in pancreas, kidney, skeletal muscle, liver, testis and heart, with detectable levels in placenta, brain, astrocytes, Sertoli cells, spermatogonia, spermatids and spermatozoa. Defects in Park7 are the cause of autosomal recessive early-onset Parkinson disease 7 (PARK7), a form of Parkinson disease characterized by onset before 40 years, slow progression and initial good response to levodopa.

**Synonyms:**

Oncogene DJ1, Parkinson disease protein 7

**Product images:**

Western blot analysis of anti-Park7 (DJ-1) Antibody (N-term) in mouse brain, kidney, liver tissue lysates and NIH-3T3, HeLa cell line lysates (35ug/lane). Park7 (arrow) was detected using the purified Pab.