

Product datasheet for **AP13478PU-N**

PINK1 Rabbit Polyclonal Antibody

Product data:

Product Type:	Primary Antibodies
Applications:	ELISA, IHC, WB
Recommended Dilution:	ELISA: 1/1,000. Western blotting: 1/100 - 1/500. Immunohistochemistry: 1/50 - 1/100.
Reactivity:	Human
Host:	Rabbit
Isotype:	Ig
Clonality:	Polyclonal
Immunogen:	This antibody is generated from rabbits immunized with a KLH conjugated synthetic peptide in the N-terminal region of human Park6 (PINK1).
Specificity:	This antibody reacts to PINK1 (PARK6).
Formulation:	PBS with 0.09% (W/V) sodium azide State: Purified State: Liquid purified Ig
Concentration:	lot specific
Purification:	Prepared by Saturated Ammonium Sulfate (SAS) precipitation followed by dialysis against PBS
Conjugation:	Unconjugated
Storage:	Store the antibody undiluted at 2-8°C for one month or (in aliquots) at -20°C for longer. Avoid repeated freezing and thawing.
Stability:	Shelf life: one year from despatch.
Gene Name:	PTEN induced putative kinase 1
Database Link:	Entrez Gene 65018 Human Q9BXM7



[View online »](#)

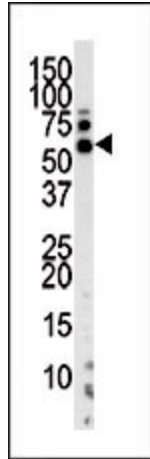
Background:

Defects in PINK1 are the cause of autosomal recessive early-onset Parkinson's disease 6 (PARK6). Six novel pathogenic PINK1 mutations suggest that PINK1 may be the second most common causative gene next to parkin in parkinsonism with the recessive mode of inheritance. Strong evidence indicates that, although important in mendelian forms of Parkinson's disease (PD), PINK1 does not influence the cause of sporadic nonmendelian forms of PD.

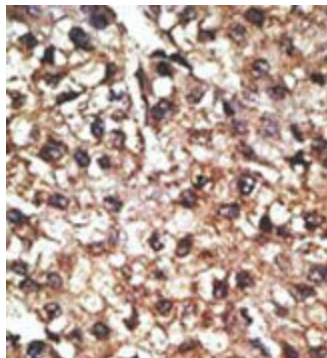
Synonyms:

PTEN-induced putative kinase protein 1, PARK6, BRPK, PINK-1

Product images:



Western blot analysis of anti-PARK6 Pab in mouse kidney tissue lysate. PARK6 (arrow) was detected using the purified Pab.



Formalin-fixed and paraffin-embedded human cancer tissue reacted with the primary antibody, which was peroxidase-conjugated to the secondary antibody, followed by AEC staining.