

Product datasheet for **AP13477PU-N**

alpha Synuclein (SNCA) (C-term) Rabbit Polyclonal Antibody

Product data:

Product Type:	Primary Antibodies
Applications:	WB
Recommended Dilution:	ELISA: 1/1,000. Western blotting: 1/100 - 1/500.
Reactivity:	Human
Host:	Rabbit
Isotype:	Ig
Clonality:	Polyclonal
Immunogen:	This antibody is generated from rabbits immunized with a KLH conjugated synthetic peptide in the C-terminal region of human Alpha-synuclein that is specific for Alpha-synuclein isoform NACP140 not NACP112.
Specificity:	This antibody reacts to Alpha-Synuclein.
Formulation:	PBS with 0.09% (W/V) sodium azide State: Purified State: Liquid purified Ig
Concentration:	lot specific
Purification:	Prepared by Saturated Ammonium Sulfate (SAS) precipitation followed by dialysis against PBS
Conjugation:	Unconjugated
Storage:	Store the antibody undiluted at 2-8°C for one month or (in aliquots) at -20°C for longer. Avoid repeated freezing and thawing.
Stability:	Shelf life: one year from despatch.
Gene Name:	synuclein alpha
Database Link:	Entrez Gene 6622 Human P37840

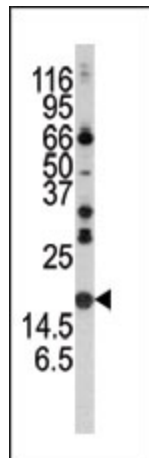
[View online »](#)

Background:

Alpha Synuclein is implicated in the regulation of dopamine release and transport. It is a soluble protein, expressed principally in the brain but also expressed in low concentrations in all tissues examined (except liver). In the nervous system, alpha Synuclein is primarily located at presynaptic terminals and is found membrane bound in dopaminergic neurons. It can form filamentous aggregates that are the major non amyloid component of intracellular inclusions in several neurodegenerative diseases (synucleinopathies), including Parkinson's Disease. Alpha Synuclein induces fibrillization of microtubule associated protein tau and reduces neuronal responsiveness to various apoptotic stimuli, leading to a decreased caspase 3 activation. Alpha synuclein is a protein phosphorylated predominantly on serine residues. Two alternatively spliced transcripts of Alpha Synuclein have been identified. Additional splicing may be present but the full-length nature of these variants has not been determined. This variant (NACP140) is the longer transcript and encodes the longer isoform (NACP140). This antibody specific recognizing Alpha-synuclein isoform NACP140 not NACP112.

Synonyms:

NACP, PARK1

Product images:


Western blot analysis of anti-Alpha-synuclein Pab in mouse brain tissue lysate. Alpha-synuclein (arrow) was detected using the purified Pab.