

## Product datasheet for **AP13465PU-N**

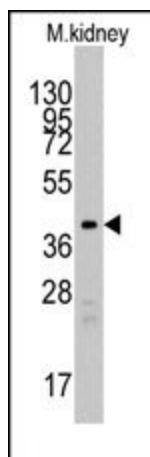
### **TBRG1 (N-term) Rabbit Polyclonal Antibody**

#### **Product data:**

Product Type:	Primary Antibodies
Applications:	WB
Recommended Dilution:	<b>Peptide ELISA:</b> 1/1,000. <b>Western blotting:</b> 1/1000.
Reactivity:	Human
Host:	Rabbit
Isotype:	Ig
Clonality:	Polyclonal
Immunogen:	KLH conjugated synthetic peptide between 6-36 amino acids from the N-terminal region of human TBRG1.
Specificity:	This antibody reacts to TBRG1.
Formulation:	PBS with 0.09% (W/V) sodium azide State: Purified State: Liquid purified Ig
Concentration:	lot specific
Purification:	Prepared by Saturated Ammonium Sulfate (SAS) precipitation followed by dialysis against PBS
Conjugation:	Unconjugated
Storage:	Store the antibody undiluted at 2-8°C for one month or (in aliquots) at -20°C for longer. Avoid repeated freezing and thawing.
Stability:	Shelf life: one year from despatch.
Gene Name:	transforming growth factor beta regulator 1
Database Link:	<a href="#">Entrez Gene 84897 Human Q3YBR2</a>
Background:	TBRG1 acts as a growth inhibitor. It can activate TP53/p53, cause G1 arrest and collaborate with CDKN2A to restrict proliferation, but it does not require either protein to inhibit DNA synthesis. TBRG1 redistributes CDKN2A into the nucleoplasm, and is involved in maintaining chromosomal stability.
Synonyms:	AA408552; AA409675; mFLJ00213; MGC95119; Niam; Tb-5



[View online »](#)

**Product images:**

Western blot analysis of anti-TBRG1 Pab in mouse kidney tissue lysates (35ug/lane). TBRG1 (arrow) was detected using the purified Pab (1:60 dilution).