

Product datasheet for **AP13464PU-N**

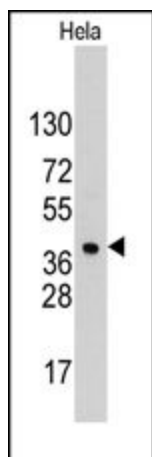
HDGF (C-term) Rabbit Polyclonal Antibody

Product data:

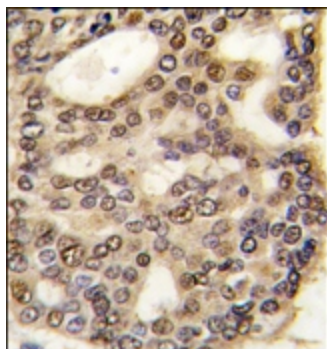
Product Type:	Primary Antibodies
Applications:	IHC, WB
Recommended Dilution:	ELISA: 1/1,000. Western blotting: 1/50 - 1/100. Immunohistochemistry: 1/10 - 1/50.
Reactivity:	Human
Host:	Rabbit
Isotype:	Ig
Clonality:	Polyclonal
Immunogen:	This antibody is generated from rabbits immunized with a KLH conjugated synthetic peptide selected from the C-terminal region of human HDGF.
Specificity:	This antibody reacts to HDGF.
Formulation:	PBS with 0.09% (W/V) sodium azide State: Purified State: Liquid purified Ig
Concentration:	lot specific
Purification:	Prepared by Saturated Ammonium Sulfate (SAS) precipitation followed by dialysis against PBS
Conjugation:	Unconjugated
Storage:	Store the antibody undiluted at 2-8°C for one month or (in aliquots) at -20°C for longer. Avoid repeated freezing and thawing.
Stability:	Shelf life: one year from despatch.
Gene Name:	hepatoma-derived growth factor
Database Link:	Entrez Gene 3068 Human P51858
Background:	HDGF is a member of the hepatoma-derived growth factor family. This protein has mitogenic and DNA-binding activity and may play a role in cellular proliferation and differentiation.
Synonyms:	Hepatoma-derived growth factor, HMG1L2, HMG-1L2



[View online »](#)

Product images:

Western blot analysis of anti-HDGF Pab in HeLa cell line lysates (35ug/lane). HDGF (arrow) was detected using the purified Pab (1:60 dilution).



Formalin-fixed and paraffin-embedded human hepatocarcinoma tissue reacted with HDGF antibody (C-term), which was peroxidase-conjugated to the secondary antibody, followed by DAB staining.