

## Product datasheet for **AP13459PU-N**

### Myosin 1C (MYO1C) (C-term) Rabbit Polyclonal Antibody

#### Product data:

Product Type:	Primary Antibodies
Applications:	IHC, WB
Recommended Dilution:	Western blotting: 1/1000. Immunohistochemistry: 1/10 - 1/50.
Reactivity:	Human
Host:	Rabbit
Isotype:	Ig
Clonality:	Polyclonal
Immunogen:	This antibody is generated from rabbits immunized with a KLH conjugated synthetic peptide between 911-940 amino acids from the C-terminal region of human MYO1C.
Specificity:	This antibody reacts to Myosin 1C (MYO1C).
Formulation:	PBS with 0.09% (W/V) sodium azide State: Purified State: Liquid purified Ig
Concentration:	lot specific
Purification:	This antibody is prepared by Saturated Ammonium Sulfate (SAS) precipitation followed by dialysis against PBS.
Conjugation:	Unconjugated
Storage:	Store the antibody undiluted at 2-8°C for one month or (in aliquots) at -20°C for longer. Avoid repeated freezing and thawing.
Stability:	Shelf life: one year from despatch.
Gene Name:	myosin IC
Database Link:	<a href="#">Entrez Gene 4641 Human</a> <a href="#">O00159</a>



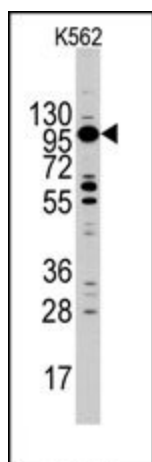
[View online »](#)

**Background:**

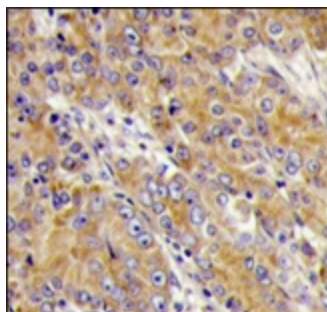
MYO1C is a member of the unconventional myosin protein family, which are actin-based molecular motors. The protein is found in the cytoplasm, and one isoform with a unique N-terminus is also found in the nucleus. The nuclear isoform associates with RNA polymerase I and II and functions in transcription initiation. The mouse ortholog of this protein also functions in intracellular vesicle transport to the plasma membrane.

**Synonyms:**

Myosin I beta, MMI-beta, MYO1C, MMIb

**Product images:**

Western blot analysis of MYO1C Antibody (C-term) in K562 cell line lysates (35ug/lane). MYO1C (arrow) was detected using the purified Pab (1:60 dilution).



Formalin-fixed and paraffin-embedded human prostata carcinoma tissue reacted with MYO1C antibody (C-term), which was peroxidase-conjugated to the secondary antibody, followed by DAB staining.