

Product datasheet for **AP13379PU-N**

Kallikrein 9 (KLK9) (N-term) Rabbit Polyclonal Antibody

Product data:

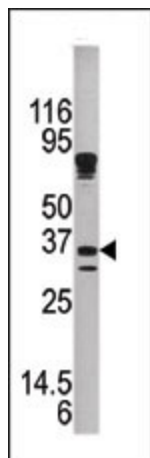
Product Type:	Primary Antibodies
Applications:	WB
Recommended Dilution:	ELISA: 1/1,000. Western blotting: 1/100 - 1/500.
Reactivity:	Human
Host:	Rabbit
Isotype:	Ig
Clonality:	Polyclonal
Immunogen:	This antibody is generated from rabbits immunized with a KLH conjugated synthetic peptide selected from the N-terminal region of human KLK9.
Specificity:	This antibody reacts to Kallikrein 9 (KLK9).
Formulation:	PBS with 0.09% (W/V) sodium azide State: Purified State: Liquid purified Ig
Concentration:	lot specific
Purification:	Prepared by Saturated Ammonium Sulfate (SAS) precipitation followed by dialysis against PBS
Conjugation:	Unconjugated
Storage:	Store the antibody undiluted at 2-8°C for one month or (in aliquots) at -20°C for longer. Avoid repeated freezing and thawing.
Stability:	Shelf life: one year from despatch.
Gene Name:	kallikrein related peptidase 9
Database Link:	Entrez Gene 284366 Human Q9UKQ9
Background:	Kallikreins are a subgroup of serine proteases having diverse physiological functions. Growing evidence suggests that many kallikreins are implicated in carcinogenesis and some have potential as novel cancer and other disease biomarkers. KLK9 is a novel kallikrein with potential application for diagnosis, monitoring and therapeutics of various cancers including those of the breast, prostate and testis.



[View online »](#)

Synonyms: Kallikrein-like protein 3, KLK-L3, KLKL3

Product images:



Western blot analysis of anti-KLK9 Pab in mouse brain tissue lysate. KLK9 (arrow) was detected using the purified Pab.