

## Product datasheet for **AP13358PU-N**

### Kallikrein 2 (KLK2) (C-term) Rabbit Polyclonal Antibody

#### Product data:

Product Type:	Primary Antibodies
Applications:	WB
Recommended Dilution:	ELISA: 1/1,000. Western Blot.
Reactivity:	Human
Host:	Rabbit
Isotype:	Ig
Clonality:	Polyclonal
Immunogen:	This antibody is generated from rabbits immunized with a KLH conjugated synthetic peptide selected from the C-terminal region of human KLK2.
Specificity:	This antibody reacts to Kallikrein 2 (KLK2).
Formulation:	PBS with 0.09% (W/V) sodium azide State: Purified State: Liquid purified Ig
Concentration:	lot specific
Purification:	Protein G column, eluted with high and low pH buffers and neutralized immediately, followed by dialysis against PBS
Conjugation:	Unconjugated
Storage:	Store the antibody undiluted at 2-8°C for one month or (in aliquots) at -20°C for longer. Avoid repeated freezing and thawing.
Stability:	Shelf life: one year from despatch.
Gene Name:	kallikrein related peptidase 2
Database Link:	<a href="#">Entrez Gene 3817 Human P20151</a>



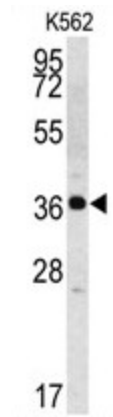
[View online »](#)

**Background:**

Kallikreins are a group of serine proteases manifesting diverse physiological functions. The glandular kallikreins are a distinct group of serine proteases with an ability to release vasoactive peptides from kininogen in vitro, although the kininogenase activity of different kallikreins is highly variable. Glandular kallikreins cleave Met-Lys and Arg-Ser bonds in kininogen to release Lys-bradykinin. Many kallikrein genes are differentially expressed in various malignancies. Human glandular kallikrein (hK2; encoded by the KLK2 gene) is an emerging tumor marker for prostate cancer.

**Synonyms:**

hGK-1, hK2

**Product images:**

Western blot analysis of Kallikrein 2 (KLK2) Antibody (C-term) in K562 cell line lysates (35ug/lane). KLK2 (arrow) was detected using the purified Pab.