

Product datasheet for **AP13351PU-N**

VPS26C (N-term) Rabbit Polyclonal Antibody

Product data:

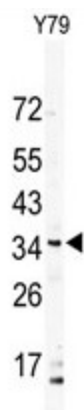
Product Type:	Primary Antibodies
Applications:	WB
Recommended Dilution:	ELISA: 1/1,000. Western Blot.
Reactivity:	Human
Host:	Rabbit
Isotype:	Ig
Clonality:	Polyclonal
Immunogen:	This antibody is generated from rabbits immunized with a KLH conjugated synthetic peptide selected from the N-terminal region of human DSCR3.
Specificity:	This antibody reacts to DSCR3.
Formulation:	PBS with 0.09% (W/V) sodium azide State: Purified State: Liquid purified Ig
Concentration:	lot specific
Purification:	Protein G column, eluted with high and low pH buffers and neutralized immediately, followed by dialysis against PBS
Conjugation:	Unconjugated
Storage:	Store the antibody undiluted at 2-8°C for one month or (in aliquots) at -20°C for longer. Avoid repeated freezing and thawing.
Stability:	Shelf life: one year from despatch.
Gene Name:	DSCR3 arrestin fold containing
Database Link:	Entrez Gene 10311 Human O14972

[View online »](#)

Background: The region of chromosome 21 between genes CBR and ERG (CBR-ERG region), which spans 2.5 Mb on 21q22.2, has been defined by analysis of patients with partial trisomy 21. It contributes significantly to the pathogenesis of many characteristics of Down syndrome, including morphological features, hypotonia, and mental retardation. The DSCR3 (Down syndrome critical region gene 3) gene is found in this region and is predicted to contain eight exons. DSCR3 is expressed in most tissues examined.

Synonyms: Down syndrome critical region protein 3, DCRA, DSCRA

Product images:



Western blot analysis of DSCR3 Antibody (N-term) in Y79 cell line lysates (35ug/lane). DSCR3 (arrow) was detected using the purified Pab.