

## Product datasheet for **AP13345PU-N**

### Calciressin 1 (RCAN1) (C-term) Rabbit Polyclonal Antibody

#### Product data:

Product Type:	Primary Antibodies
Applications:	WB
Recommended Dilution:	ELISA: 1/1,000. Western blotting: 1/100 - 1/500.
Reactivity:	Human
Host:	Rabbit
Isotype:	Ig
Clonality:	Polyclonal
Immunogen:	This antibody is generated from rabbits immunized with a KLH conjugated synthetic peptide selected from the C-terminal region of human DSCR1.
Specificity:	This antibody reacts to DSCR1.
Formulation:	PBS with 0.09% (W/V) sodium azide State: Purified State: Liquid purified Ig
Concentration:	lot specific
Purification:	Protein G column, eluted with high and low pH buffers and neutralized immediately, followed by dialysis against PBS
Conjugation:	Unconjugated
Storage:	Store the antibody undiluted at 2-8°C for one month or (in aliquots) at -20°C for longer. Avoid repeated freezing and thawing.
Stability:	Shelf life: one year from despatch.
Gene Name:	regulator of calcineurin 1
Database Link:	<a href="#">Entrez Gene 1827 Human P53805</a>



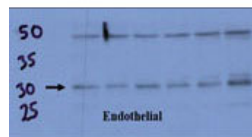
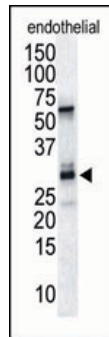
[View online »](#)

**Background:**

DSCR1 interacts with calcineurin A and inhibits calcineurin-dependent signaling pathways, possibly affecting central nervous system development. The gene for this protein is located in the minimal candidate region for the Down syndrome phenotype, and is overexpressed in the brain of Down syndrome fetuses. Chronic overexpression of DSCR1 may lead to neurofibrillary tangles such as those associated with Alzheimer disease.

**Synonyms:**

RCAN1, ADAPT78, CSP1, DSC1, DSCR1

**Product images:**


TOP: The anti-DSCR1 Pab is used in Western blot to detect DSCR1 in endothelial tissue lysate.  
 BOTTOM: Endothelial cell lysate transferred to membrane was incubated with primary antibody at a 1:500 dilution in 2% BSA in TBST at 4? overnight.