

Product datasheet for **AP13339PU-N**

SPPL3 (N-term) Rabbit Polyclonal Antibody

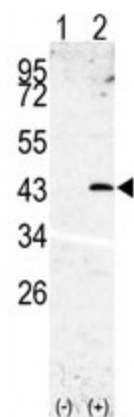
Product data:

Product Type:	Primary Antibodies
Applications:	WB
Recommended Dilution:	ELISA: 1/1,000.
Reactivity:	Human
Host:	Rabbit
Isotype:	Ig
Clonality:	Polyclonal
Immunogen:	This antibody is generated from rabbits immunized with a KLH conjugated synthetic peptide selected from the N-terminal region of human SPPL3.
Specificity:	This antibody reacts to SPPL3.
Formulation:	PBS with 0.09% (W/V) sodium azide State: Purified State: Liquid purified Ig
Concentration:	lot specific
Purification:	Protein G column, eluted with high and low pH buffers and neutralized immediately, followed by dialysis against PBS
Conjugation:	Unconjugated
Storage:	Store the antibody undiluted at 2-8°C for one month or (in aliquots) at -20°C for longer. Avoid repeated freezing and thawing.
Stability:	Shelf life: one year from despatch.
Gene Name:	signal peptide peptidase like 3
Database Link:	Entrez Gene 121665 Human Q8TCT6
Background:	Signal peptide peptidase (SPP) is an aspartyl protease that mediates clearance of signal peptides by proteolysis within the endoplasmic reticulum (ER). Like presenilins, SPP contains a critical GXGD motif in its C-terminal catalytic center. SPPL3 is one of several presenilin homologues/SPP-like proteins (PSHs/SPPL) that have been identified.
Synonyms:	SPP-like 3, Presenilin-like protein 4, PSL4, Intramembrane protease 2, IMP2, IMP-2



[View online »](#)

Product images:



Western blot analysis of SPPL3 (arrow) using rabbit polyclonal SPPL3 Antibody (N-term). 293 cell lysates (2 ug/lane) either nontransfected (Lane 1) or transiently transfected with the SPPL3 gene (Lane 2)