

## Product datasheet for **AP13336PU-N**

### SPPL2A (N-term) Rabbit Polyclonal Antibody

#### Product data:

Product Type:	Primary Antibodies
Applications:	IHC, WB
Recommended Dilution:	ELISA: 1/1,000. Western blotting: 1/1,000. Immunohistochemistry: 1/10-1/50. Flow Cytometry (Not tested).
Reactivity:	Human
Host:	Rabbit
Isotype:	Ig
Clonality:	Polyclonal
Immunogen:	This SPPL2a antibody is generated from rabbits immunized with a KLH conjugated synthetic peptide between 108-138 amino acids from the N-terminal region of human SPPL2a.
Specificity:	This antibody reacts to SPPL2a.
Formulation:	PBS with 0.09% (W/V) sodium azide State: Purified State: Liquid purified Ig
Concentration:	lot specific
Purification:	Saturated Ammonium Sulfate (SAS) precipitation followed by dialysis against PBS
Conjugation:	Unconjugated
Storage:	Store the antibody undiluted at 2-8°C for one month or (in aliquots) at -20°C for longer. Avoid repeated freezing and thawing.
Stability:	Shelf life: one year from despatch.
Gene Name:	signal peptide peptidase like 2A
Database Link:	<a href="#">Entrez Gene 84888 Human Q8TCT8</a>



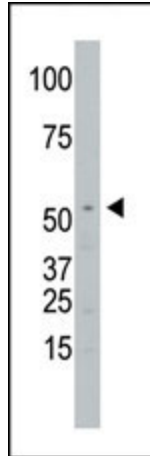
[View online »](#)

**Background:**

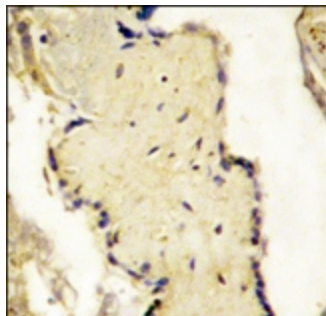
By searching sequence databases for homologs of Dictyostelium discoideum Impas, which shares homology with presenilin, followed by PCR of lymphocyte and hippocampus cDNA libraries, Grigorenko et al. (2002) cloned SPPL2a. This protein, which may act as an intramembrane protease, contains an N-terminal protease-associated (PA) domain, several transmembrane regions, a hydrophilic loop, conservative sequences around the first and second aspartate residues, and an invariant PAL motif near the C terminus.

**Synonyms:**

SPP-like 2A, Presenilin-like protein 2, PSL2, Intramembrane protease 3, IMP3, IMP-3

**Product images:**


The anti-SPPL2a Pab is used in Western blot to detect SPPL2a in Jurkat cell lysate.



Formalin-fixed and paraffin-embedded placenta tissue reacted with SPPL2a Antibody (N-term), which was peroxidase-conjugated to the secondary antibody, followed by DAB staining.