

Product datasheet for **AP13334PU-N**

Calcipressin 3 (RCAN3) (N-term) Rabbit Polyclonal Antibody

Product data:

Product Type:	Primary Antibodies
Applications:	WB
Recommended Dilution:	ELISA: 1/1,000. Western blotting: 1/100 - 1/500. Flow cytometry.
Reactivity:	Human, Mouse
Host:	Rabbit
Isotype:	Ig
Clonality:	Polyclonal
Immunogen:	This antibody is generated from rabbits immunized with a KLH conjugated synthetic peptide selected from the N-terminal region of human DSCR1L2.
Specificity:	This antibody reacts to Calcipressin 3 (DSCR1L2).
Formulation:	PBS with 0.09% (W/V) sodium azide State: Purified State: Liquid purified Ig
Concentration:	lot specific
Purification:	Protein G column, eluted with high and low pH buffers and neutralized immediately, followed by dialysis against PBS
Conjugation:	Unconjugated
Storage:	Store the antibody undiluted at 2-8°C for one month or (in aliquots) at -20°C for longer. Avoid repeated freezing and thawing.
Stability:	Shelf life: one year from despatch.
Gene Name:	RCAN family member 3
Database Link:	Entrez Gene 11123 Human Q9UKA8



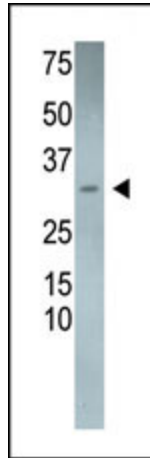
[View online »](#)

Background:

DSCR1L2 inhibits calcineurin-dependent transcriptional responses by binding to the catalytic domain of calcineurin A, and may play a role during central nervous system development. Highest expression occurs in heart, skeletal muscle kidney, liver and peripheral blood leukocytes.

Synonyms:

RCAN3, DSCR1L2

Product images:

The anti-DSCR1L2 Pab is used in Western blot to detect DSCR1L2 in mouse heart tissue lysate.