

Product datasheet for **AP13332PU-N**

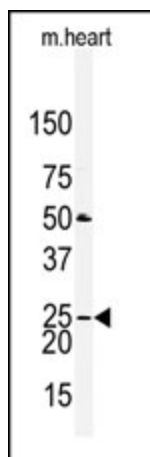
Claudin 2 (CLDN2) (N-term) Rabbit Polyclonal Antibody

Product data:

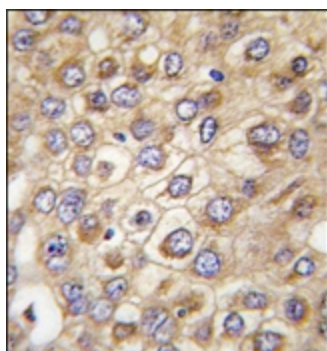
Product Type:	Primary Antibodies
Applications:	IHC, WB
Recommended Dilution:	ELISA: 1/1,000. Western blotting: 1/1000. Immunohistochemistry on Paraffin Sections: 1/10-1/50.
Reactivity:	Human
Host:	Rabbit
Isotype:	Ig
Clonality:	Polyclonal
Immunogen:	KLH conjugated synthetic peptide between 135-164 amino acids from the N-terminal region of Human Claudin 2 (CLDN2).
Specificity:	This antibody reacts to the N-term of Claudin 2 (CLDN2).
Formulation:	PBS State: Aff - Purified State: Liquid purified Ig fraction Preservative: 0.09% (W/V) Sodium Azide
Concentration:	lot specific
Purification:	Protein A column, followed by peptide affinity purification
Conjugation:	Unconjugated
Storage:	Store the antibody undiluted at 2-8°C for one month or (in aliquots) at -20°C for longer. Avoid repeated freezing and thawing.
Stability:	Shelf life: one year from despatch.
Gene Name:	claudin 2
Database Link:	Entrez Gene 9075 Human P57739
Background:	Members of the claudin protein family, such as CLDN2, are expressed in an organ-specific manner and regulate the tissue-specific physiologic properties of tight junctions.
Synonyms:	SP82, CLD2



[View online »](#)

Product images:

Western blot analysis of anti-CLDN2 Antibody (N-term) in mouse heart tissue lysates (35ug/lane). CLDN2 (arrow) was detected using the purified Pab (1:240 dilution).



Formalin-fixed and paraffin-embedded human hepatocarcinoma tissue reacted with CLDN2 (Human N-term), which was peroxidase-conjugated to the secondary antibody, followed by DAB staining.