

Product datasheet for **AP13331PU-N**

Claudin 1 (CLDN1) (Loop2) Rabbit Polyclonal Antibody

Product data:

Product Type:	Primary Antibodies
Applications:	WB
Recommended Dilution:	ELISA: 1/1,000. Western blotting: 1/50 - 1/100.
Reactivity:	Human, Mouse
Host:	Rabbit
Isotype:	Ig
Clonality:	Polyclonal
Immunogen:	This antibody is generated from rabbits immunized with a KLH conjugated synthetic peptide selected from the Loop2 region of human CLDN1.
Specificity:	This antibody reacts to Claudin 1 (CLDN1).
Formulation:	PBS with 0.09% (W/V) sodium azide State: Purified State: Liquid purified Ig
Concentration:	lot specific
Purification:	Prepared by Saturated Ammonium Sulfate (SAS) precipitation followed by dialysis against PBS
Conjugation:	Unconjugated
Storage:	Store the antibody undiluted at 2-8°C for one month or (in aliquots) at -20°C for longer. Avoid repeated freezing and thawing.
Stability:	Shelf life: one year from despatch.
Gene Name:	claudin 1
Database Link:	Entrez Gene 9076 Human O95832



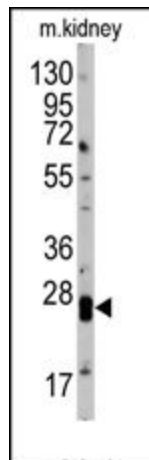
[View online »](#)

Background:

CLDN1, a member of the claudin family, is an integral membrane protein and a component of tight junction strands. Tight junctions represent one mode of cell-to-cell adhesion in epithelial or endothelial cell sheets, forming continuous seals around cells and serving as a physical barrier to prevent solutes and water from passing freely through the paracellular space. These junctions are comprised of sets of continuous networking strands in the outwardly facing cytoplasmic leaflet, with complementary grooves in the inwardly facing extracytoplasmic leaflet. Loss of function mutations result in neonatal ichthyosis-sclerosing cholangitis syndrome.

Synonyms:

CLD1, SEMP1, PRO944, UNQ481

Product images:

Western blot analysis of anti-hCLDN1-Loop2 Pab in mouse kidney tissue lysates (35ug/lane). CLDN1 (arrow) was detected using the purified Pab (1:60 dilution).