

Product datasheet for **AP13329PU-N**

ERAB (HSD17B10) (C-term) Rabbit Polyclonal Antibody

Product data:

Product Type:	Primary Antibodies
Applications:	IHC, WB
Recommended Dilution:	ELISA: 1/1,000. Western blotting: 1/100 - 1/500. Immunohistochemistry: 1/50 - 1/100.
Reactivity:	Human
Host:	Rabbit
Isotype:	Ig
Clonality:	Polyclonal
Immunogen:	This antibody is generated from rabbits immunized with a KLH conjugated synthetic peptide selected from the C-terminal region of human ABAD.
Specificity:	This antibody reacts to ABAD.
Formulation:	PBS with 0.09% (W/V) sodium azide State: Purified State: Liquid purified Ig
Concentration:	lot specific
Purification:	Prepared by Saturated Ammonium Sulfate (SAS) precipitation followed by dialysis against PBS
Conjugation:	Unconjugated
Storage:	Store the antibody undiluted at 2-8°C for one month or (in aliquots) at -20°C for longer. Avoid repeated freezing and thawing.
Stability:	Shelf life: one year from despatch.
Gene Name:	hydroxysteroid (17-beta) dehydrogenase 10
Database Link:	Entrez Gene 3028 Human Q99714



[View online »](#)

Background:

Amyloid b-peptide-binding alcohol dehydrogenase (ABAD) is a member of the family of short chain dehydrogenase/reductases; unique among this family, it binds amyloid b-peptide and exhibits enzymatic activity toward a wide variety of substrates including linear alcohols. In an amyloid beta-abundant environment, ABAD appears to trigger cell stress induced by the amyloid peptide.

Synonyms:

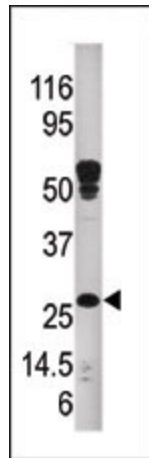
HADH2, MRPP2, SCHAD, XH98G2, 17-beta-HSD10, Mitochondrial Marker

Protein Families:

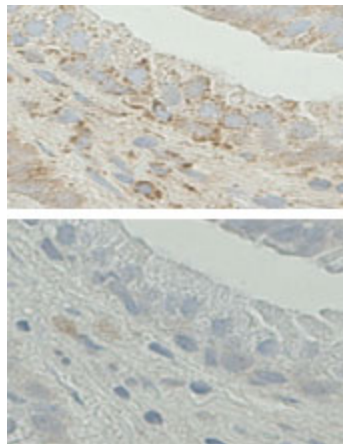
Druggable Genome

Protein Pathways:

Alzheimer's disease, Metabolic pathways, Valine, leucine and isoleucine degradation

Product images:


Western blot analysis of anti-ABAD Pab in mouse kidney tissue lysate. ABAD (arrow) was detected using the purified Pab.



Immunohistochemistry on Formalin-fixed and paraffin-embedded human prostate tissue. (Top) Coloration with the Anti-ABAD antibody at a 1:20 concentration. (Bottom) Antibody adsorbed to the antigen (peptide), negative control. Disappearance of cytoplasmic staining indicating the antibody is specific.